



*"Powering Industry for over 40
years"*



Opening & Outline

- Company History
- Outline
 - Our People
 - Our Capabilities
 - Our Experience & Strategy
- Closing Comments
- Q&A



Powering Industry for over 40 years



Company History

- 1970's - Sound research; then called "Sonic Barrier"
- 1980's - Forestry legislation led to development of sound proof operator enclosures for pulp and paper mills
- 1990's - Products expanded to: People, mechanical & electrical enclosures
- 2000's - Steady growth in OG&C / MM sectors, execution of \$12M Siemens project
- 2010's - Continued growth, capabilities expansion, Strategic Supply Chain, new management team execution of \$17M Bechtel





Detailed Outline

- **Our People** “Who we are and why we are proud to serve industry.”
- **Our Capabilities** “Our credentials and how we perform our work”
- **Our Experience & Strategy** “Our experience, product portfolio, and supply chain strategy”



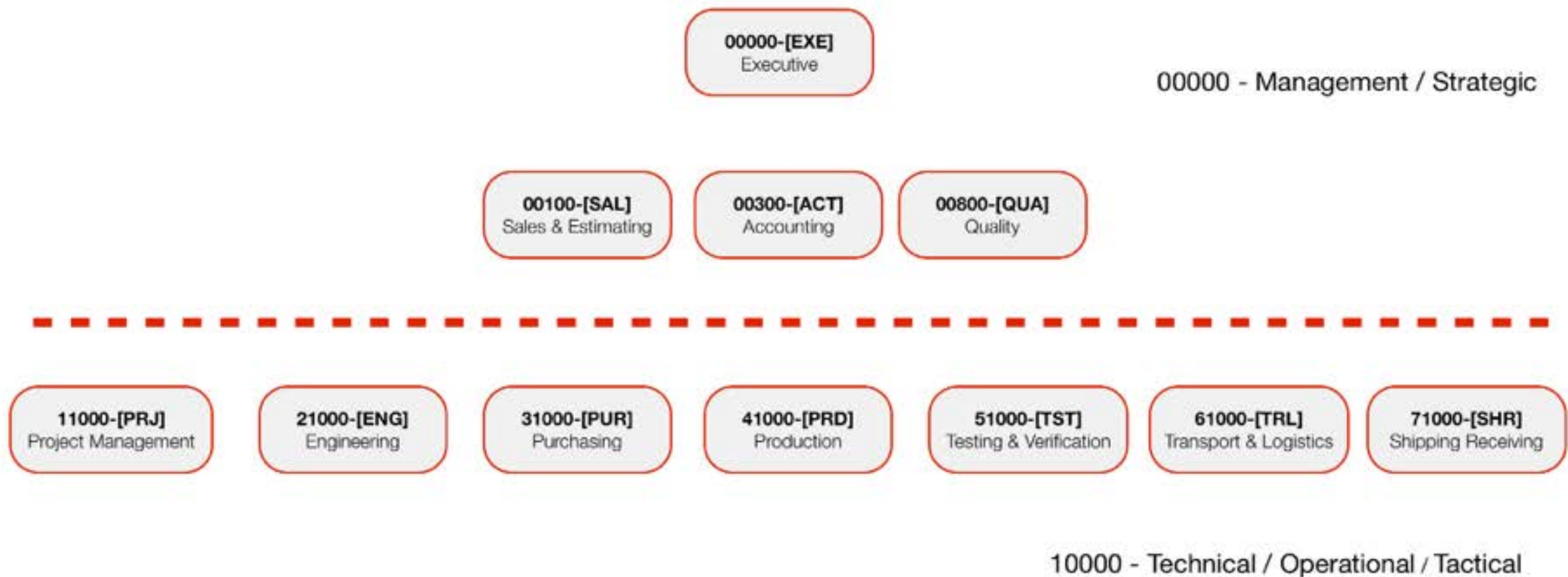


Our People





Organizational Chart





Vision

- To be North America's Industry leader in delivering engineered modular enclosure solutions.
- **People will be proud to work at Sonic-** *"We strive to create opportunities for our people to learn and grow and we will reward success"*
- **Customers will ask more of us** *"By studying the needs of our customers and delivering on all of our commitments Sonic will be an integral part of their success"*
- **We will be regarded as integral to industry** *"We will play an active role in developing our industrial base and participate in projects that contribute to growing our economy"*



Values

SAFETY *"We hold paramount the health and safety of our people"*

QUALITY *"We don't ship hardware, we ship our reputation. We take pride in the craftsmanship of our products"*

INTEGRITY *"We conduct ourselves with honesty, fairness and operate in a transparent manner to instil confidence in our customers"*


EXCELLENCE *"We work collaboratively, we seek to innovate, we set high standards, we thrive on challenges and we celebrate our accomplishments"*





Performance Incentive Plan

- **SONIC VALUES** *Demonstrating the Sonic Values*
- **SONIC QMS** *Alignment to our quality goals*
- **SONIC PRODUCT ARCHITECTURE** *Technical knowledge*



SONIC 101
Performance Incentive Plan (PIP) Guide
& Technical Reference

"Attitude & Pride Drive Results"

REV	Notes / Changes	Date	By
REV00A	Initial release post Profit Sharing Change Announcement	19-Apr-2014	MG
REV00B	Renamed to Performance Incentive Plan	21-Apr-2014	MG
REV00C	Issued for review by PRD Leads	22-April-2014	MG
REV00D	Completed Technical Section, reduced to 1,000 points	23-April-2014	MG
REV00E	Included reference graphics for QMS Section 3.2	25-April-2014	NB
REV00F	Included reference graphics for Prod. Arch. Section 3.3	26 April-2014	MS
REV00G	Added Form & Technical Reference Appendices	3-May 2014	MG
REV00I	Released for Print & Distribution	5-May 2014	MG



Town halls & Proud Employees

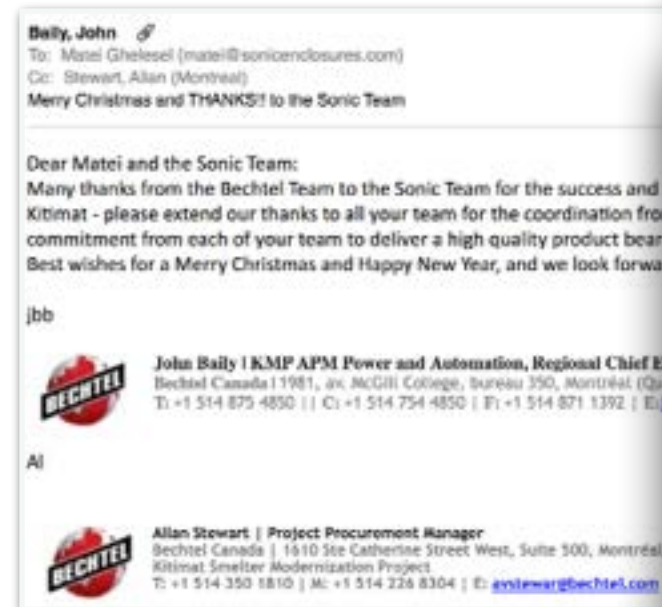
- At Sonic we believe in an open and **transparent work environment** so we conduct town halls on a quarterly basis as a minimum.
- Our most recent employee survey had over **85% of our staff score an 8 or better** on their level of pride to work @ Sonic.
- **“Attitude & Pride Drive Results”** has become one of our mantras and our customers have certainly felt the positive changes we’ve made over the past 2 years.





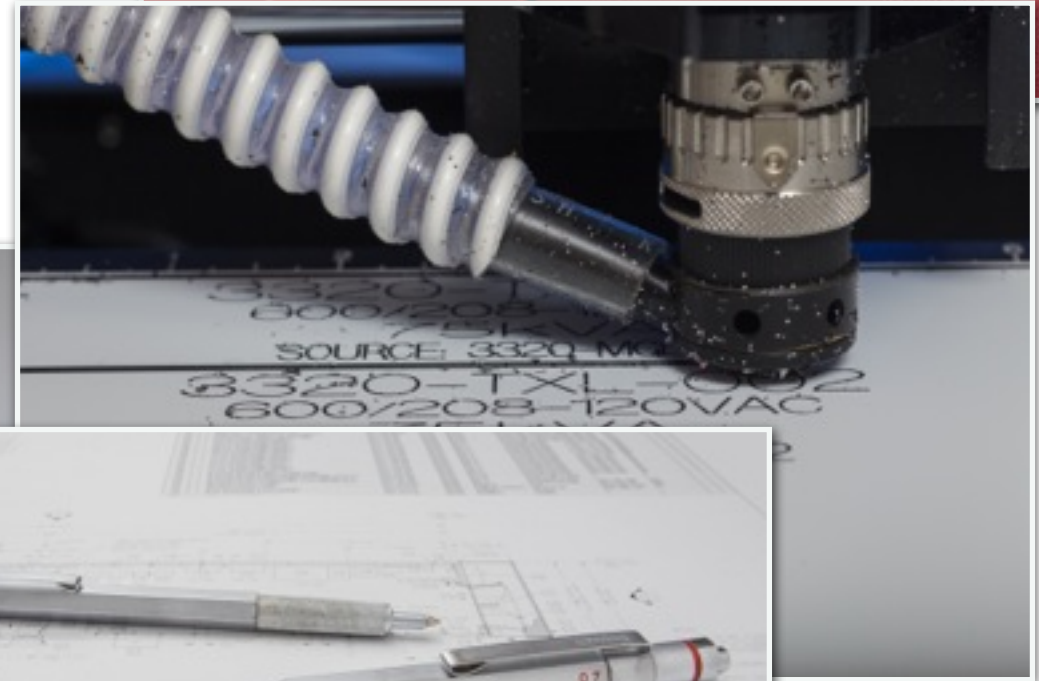
Customer Testimonials

- **TRANS CANADA** “It was a pleasure to work with you on this project” Robert Jones, Vice President
Keystone Pipelines
- **BANTREL** “Thank you for the hardwork and dedication to our Project” Mark Griffiths, Buildings Manager, Kevin Doucette, Buyer, Tara Wilson, Buildings Coordinator, Jim Rustami RE
- **BECHTEL** “ Please extend our thanks to all your team for the coordination from your engineers, craftsmanship from your builders, ownership and commitment from each of your team to deliver a high quality product bearing Sonic’s name”- John Baily, Regional Chief Engineer & Allan Stewart, Project Procurement Manager
- **FORTIS** “ We intend to continue working with Sonic for the supply of our electrical enclosures and other related products”





Our Capabilities





Sonic & Tier I Supplier Facilities

- Sonic-Head Office
- Synergy- Head Office
- Brenco- Head Office
- Kayson- Head Office
- Sonic-Remote Storage
- Sonic-Near Shore Storage
- Sonic- Water Front Access
- Sonic-Westbay





Certifications

- ISO 9001
- Canadian Welding Bureau
- Det Norske Veritas
- A660
- Manufacturing Industry
Occupational Safety Alliance of BC
- Association of Professional
Engineers & Geoscientists of BC
- Federal Motor Vehicle Safety
Standards

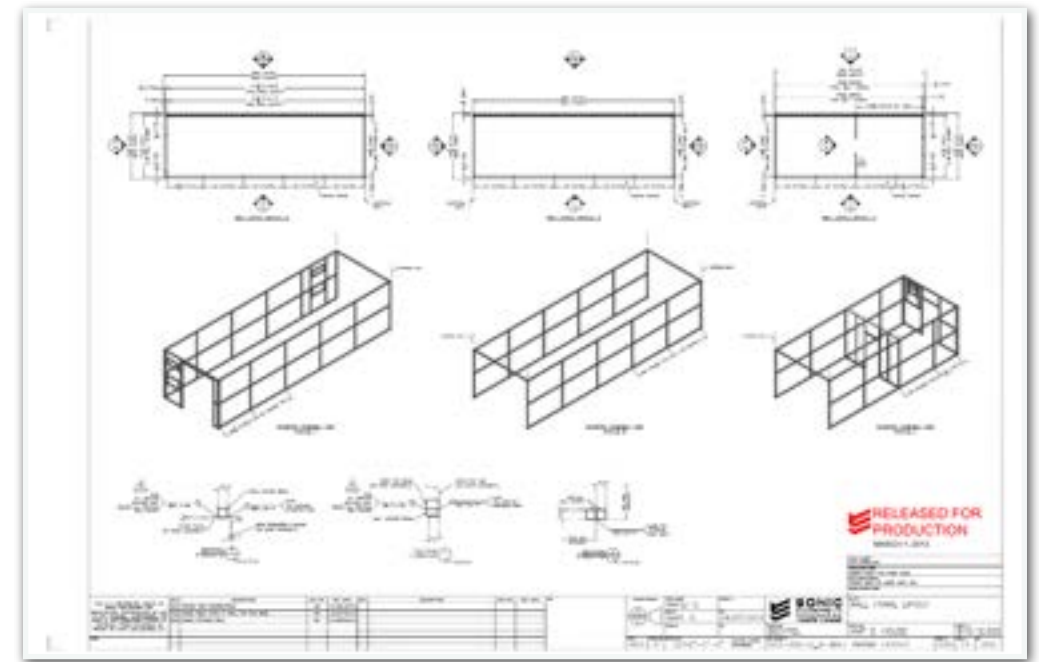




Tools & Systems

[Design]

- Auto CAD



- Solid Works

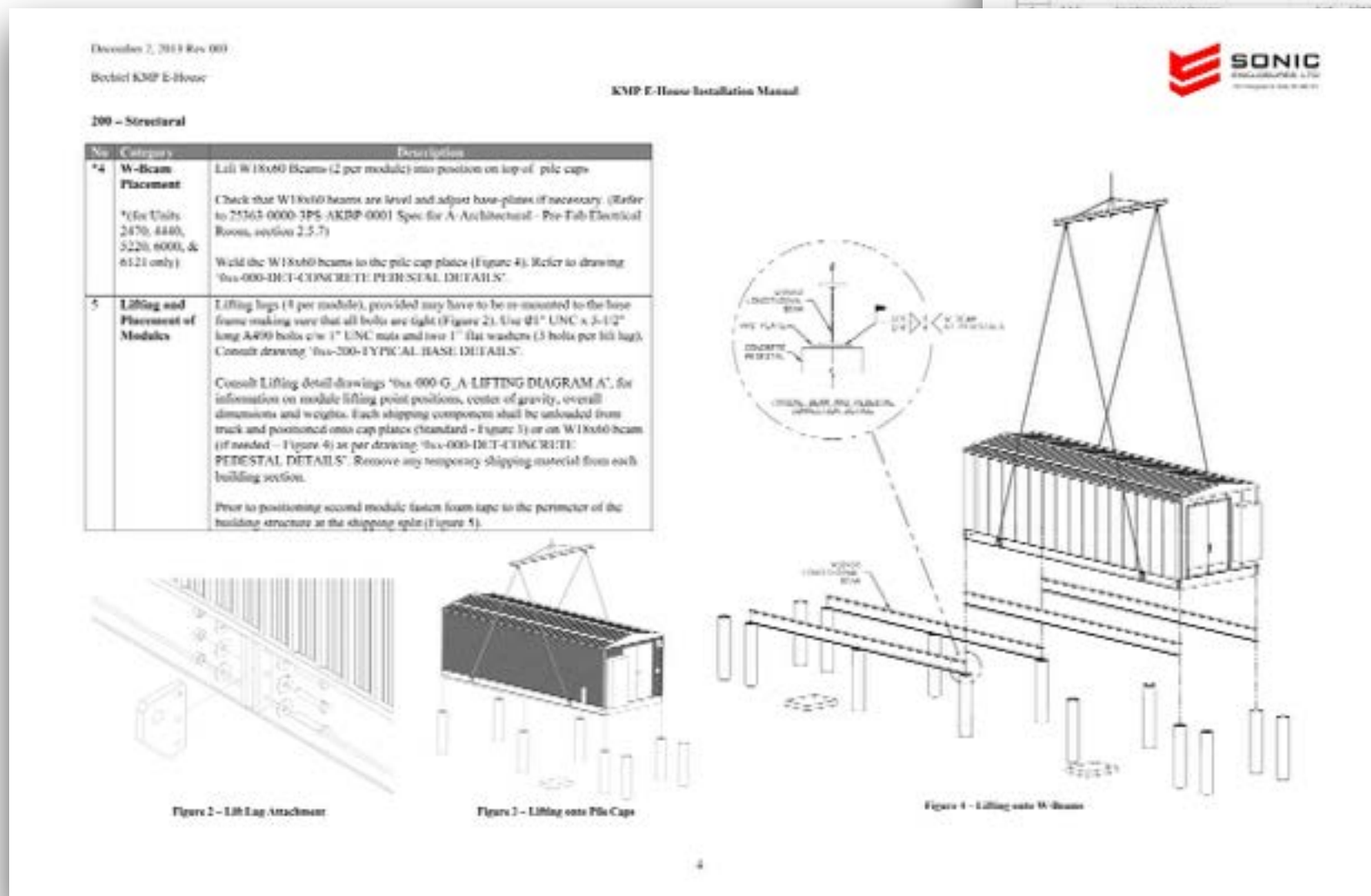
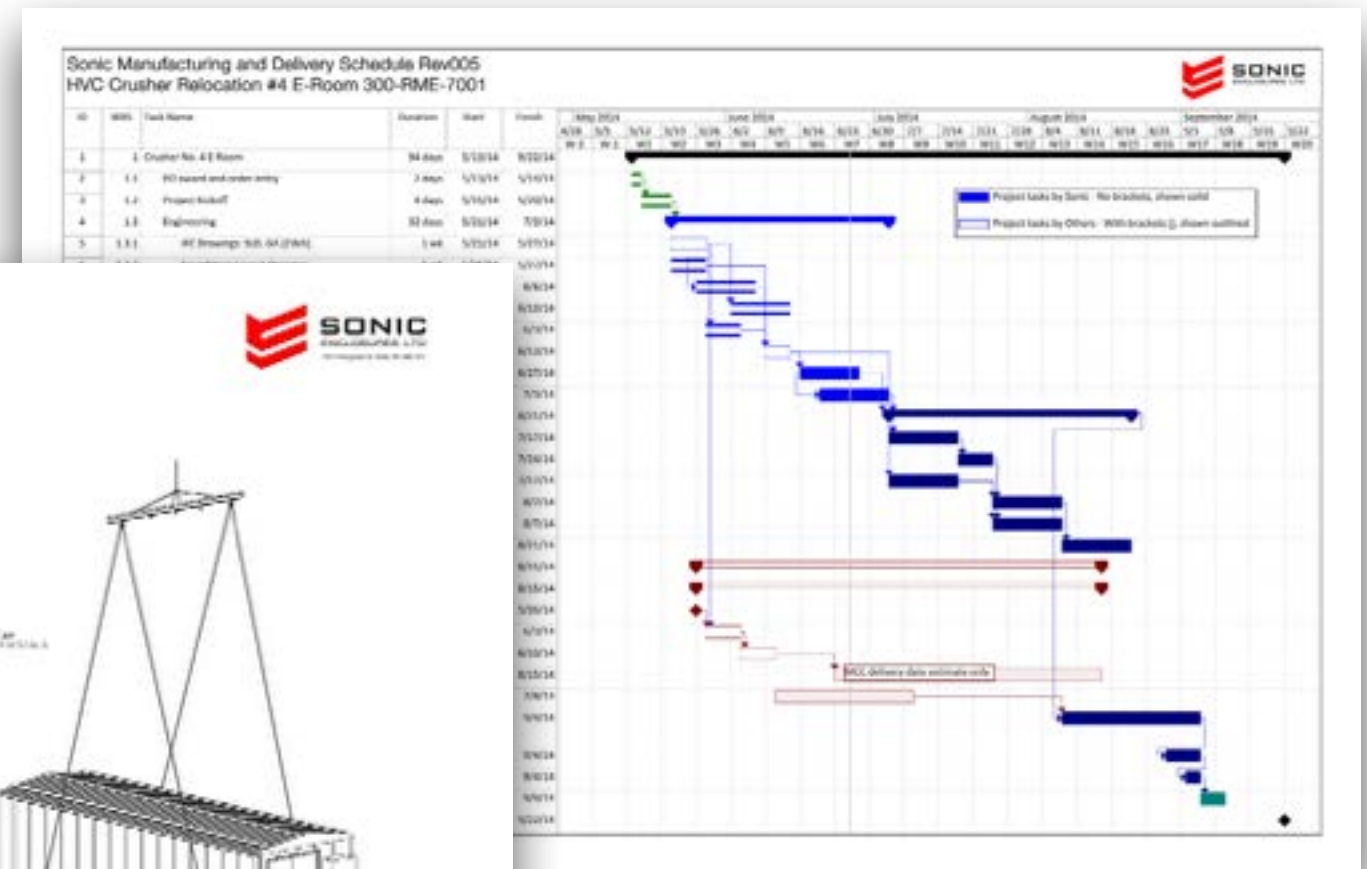




Tools & Systems

[Project Management]

- Manuals & Technical Documents- MS Word



- Project Management- MS Project & Excel



Product Architecture

[Functional Drawing Tree]



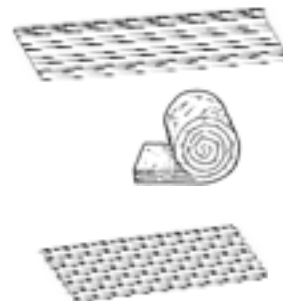
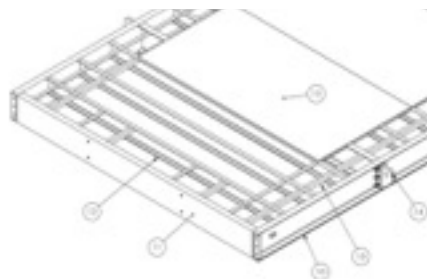
000 - E HOUSE 003			
Rev	Part	Description	Qty
1	000	000 - E HOUSE 003	1
1	001	001 - 000 - 001 - 001 - 001 - 001	1
1	002	002 - 000 - 001 - 001 - 001 - 001	1
1	003	003 - 000 - 001 - 001 - 001 - 001	1
1	004	004 - 000 - 001 - 001 - 001 - 001	1
1	005	005 - 000 - 001 - 001 - 001 - 001	1
1	006	006 - 000 - 001 - 001 - 001 - 001	1
1	007	007 - 000 - 001 - 001 - 001 - 001	1
1	008	008 - 000 - 001 - 001 - 001 - 001	1
1	009	009 - 000 - 001 - 001 - 001 - 001	1
1	010	010 - 000 - 001 - 001 - 001 - 001	1
1	011	011 - 000 - 001 - 001 - 001 - 001	1
1	012	012 - 000 - 001 - 001 - 001 - 001	1
1	013	013 - 000 - 001 - 001 - 001 - 001	1
1	014	014 - 000 - 001 - 001 - 001 - 001	1
1	015	015 - 000 - 001 - 001 - 001 - 001	1
1	016	016 - 000 - 001 - 001 - 001 - 001	1
1	017	017 - 000 - 001 - 001 - 001 - 001	1
1	018	018 - 000 - 001 - 001 - 001 - 001	1
1	019	019 - 000 - 001 - 001 - 001 - 001	1
1	020	020 - 000 - 001 - 001 - 001 - 001	1

200 - STRUCTURES AND FRAMES			
Rev	Part	Description	Qty
1	200	200 - 200 - 001 - 001 - 001 - 001	1
1	201	201 - 200 - 001 - 001 - 001 - 001	1
1	202	202 - 200 - 001 - 001 - 001 - 001	1
1	203	203 - 200 - 001 - 001 - 001 - 001	1
1	204	204 - 200 - 001 - 001 - 001 - 001	1
1	205	205 - 200 - 001 - 001 - 001 - 001	1
1	206	206 - 200 - 001 - 001 - 001 - 001	1
1	207	207 - 200 - 001 - 001 - 001 - 001	1
1	208	208 - 200 - 001 - 001 - 001 - 001	1
1	209	209 - 200 - 001 - 001 - 001 - 001	1
1	210	210 - 200 - 001 - 001 - 001 - 001	1
1	211	211 - 200 - 001 - 001 - 001 - 001	1
1	212	212 - 200 - 001 - 001 - 001 - 001	1
1	213	213 - 200 - 001 - 001 - 001 - 001	1
1	214	214 - 200 - 001 - 001 - 001 - 001	1
1	215	215 - 200 - 001 - 001 - 001 - 001	1
1	216	216 - 200 - 001 - 001 - 001 - 001	1
1	217	217 - 200 - 001 - 001 - 001 - 001	1
1	218	218 - 200 - 001 - 001 - 001 - 001	1
1	219	219 - 200 - 001 - 001 - 001 - 001	1
1	220	220 - 200 - 001 - 001 - 001 - 001	1

300 - ENVELOPE			
Rev	Part	Description	Qty
1	300	300 - 300 - 001 - 001 - 001 - 001	1
1	301	301 - 300 - 001 - 001 - 001 - 001	1
1	302	302 - 300 - 001 - 001 - 001 - 001	1
1	303	303 - 300 - 001 - 001 - 001 - 001	1
1	304	304 - 300 - 001 - 001 - 001 - 001	1
1	305	305 - 300 - 001 - 001 - 001 - 001	1
1	306	306 - 300 - 001 - 001 - 001 - 001	1
1	307	307 - 300 - 001 - 001 - 001 - 001	1
1	308	308 - 300 - 001 - 001 - 001 - 001	1
1	309	309 - 300 - 001 - 001 - 001 - 001	1
1	310	310 - 300 - 001 - 001 - 001 - 001	1
1	311	311 - 300 - 001 - 001 - 001 - 001	1
1	312	312 - 300 - 001 - 001 - 001 - 001	1
1	313	313 - 300 - 001 - 001 - 001 - 001	1
1	314	314 - 300 - 001 - 001 - 001 - 001	1
1	315	315 - 300 - 001 - 001 - 001 - 001	1
1	316	316 - 300 - 001 - 001 - 001 - 001	1
1	317	317 - 300 - 001 - 001 - 001 - 001	1
1	318	318 - 300 - 001 - 001 - 001 - 001	1
1	319	319 - 300 - 001 - 001 - 001 - 001	1
1	320	320 - 300 - 001 - 001 - 001 - 001	1

400 - ELECTRICAL			
Rev	Part	Description	Qty
1	400	400 - 400 - 001 - 001 - 001 - 001	1
1	401	401 - 400 - 001 - 001 - 001 - 001	1
1	402	402 - 400 - 001 - 001 - 001 - 001	1
1	403	403 - 400 - 001 - 001 - 001 - 001	1
1	404	404 - 400 - 001 - 001 - 001 - 001	1
1	405	405 - 400 - 001 - 001 - 001 - 001	1
1	406	406 - 400 - 001 - 001 - 001 - 001	1
1	407	407 - 400 - 001 - 001 - 001 - 001	1
1	408	408 - 400 - 001 - 001 - 001 - 001	1
1	409	409 - 400 - 001 - 001 - 001 - 001	1
1	410	410 - 400 - 001 - 001 - 001 - 001	1
1	411	411 - 400 - 001 - 001 - 001 - 001	1
1	412	412 - 400 - 001 - 001 - 001 - 001	1
1	413	413 - 400 - 001 - 001 - 001 - 001	1
1	414	414 - 400 - 001 - 001 - 001 - 001	1
1	415	415 - 400 - 001 - 001 - 001 - 001	1
1	416	416 - 400 - 001 - 001 - 001 - 001	1
1	417	417 - 400 - 001 - 001 - 001 - 001	1
1	418	418 - 400 - 001 - 001 - 001 - 001	1
1	419	419 - 400 - 001 - 001 - 001 - 001	1
1	420	420 - 400 - 001 - 001 - 001 - 001	1

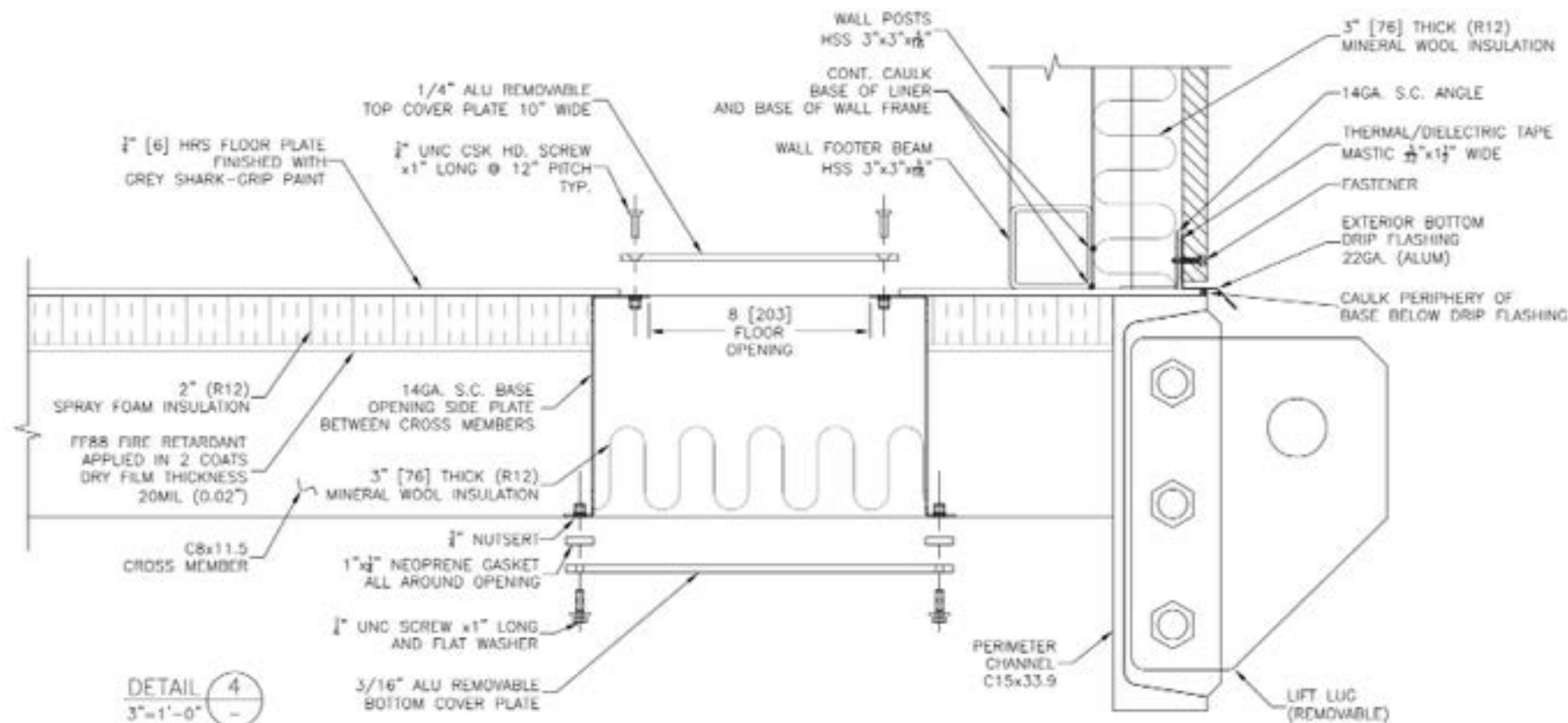
500 - MECHANICAL			
Rev	Part	Description	Qty
1	500	500 - 500 - 001 - 001 - 001 - 001	1
1	501	501 - 500 - 001 - 001 - 001 - 001	1
1	502	502 - 500 - 001 - 001 - 001 - 001	1
1	503	503 - 500 - 001 - 001 - 001 - 001	1
1	504	504 - 500 - 001 - 001 - 001 - 001	1
1	505	505 - 500 - 001 - 001 - 001 - 001	1
1	506	506 - 500 - 001 - 001 - 001 - 001	1
1	507	507 - 500 - 001 - 001 - 001 - 001	1
1	508	508 - 500 - 001 - 001 - 001 - 001	1
1	509	509 - 500 - 001 - 001 - 001 - 001	1
1	510	510 - 500 - 001 - 001 - 001 - 001	1
1	511	511 - 500 - 001 - 001 - 001 - 001	1
1	512	512 - 500 - 001 - 001 - 001 - 001	1
1	513	513 - 500 - 001 - 001 - 001 - 001	1
1	514	514 - 500 - 001 - 001 - 001 - 001	1
1	515	515 - 500 - 001 - 001 - 001 - 001	1
1	516	516 - 500 - 001 - 001 - 001 - 001	1
1	517	517 - 500 - 001 - 001 - 001 - 001	1
1	518	518 - 500 - 001 - 001 - 001 - 001	1
1	519	519 - 500 - 001 - 001 - 001 - 001	1
1	520	520 - 500 - 001 - 001 - 001 - 001	1



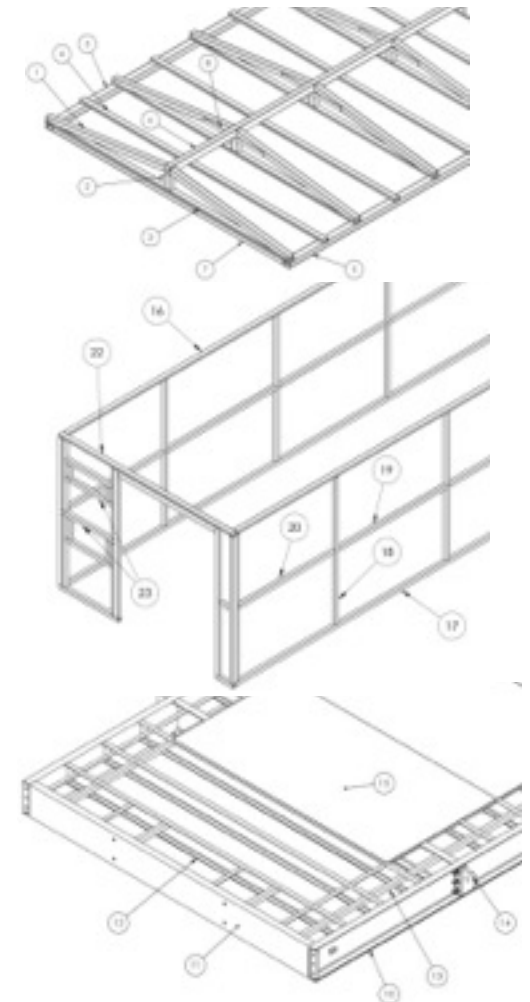


Product Architecture

[200 Structures & Frames]



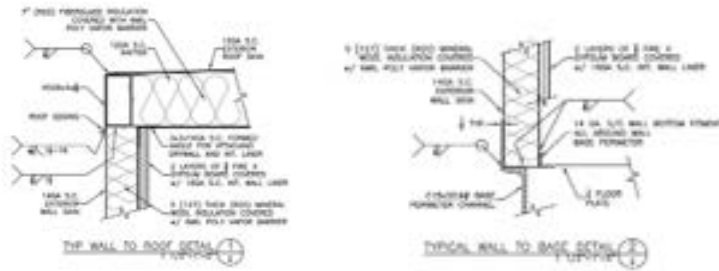
Typical Parts / Sub Assemblies



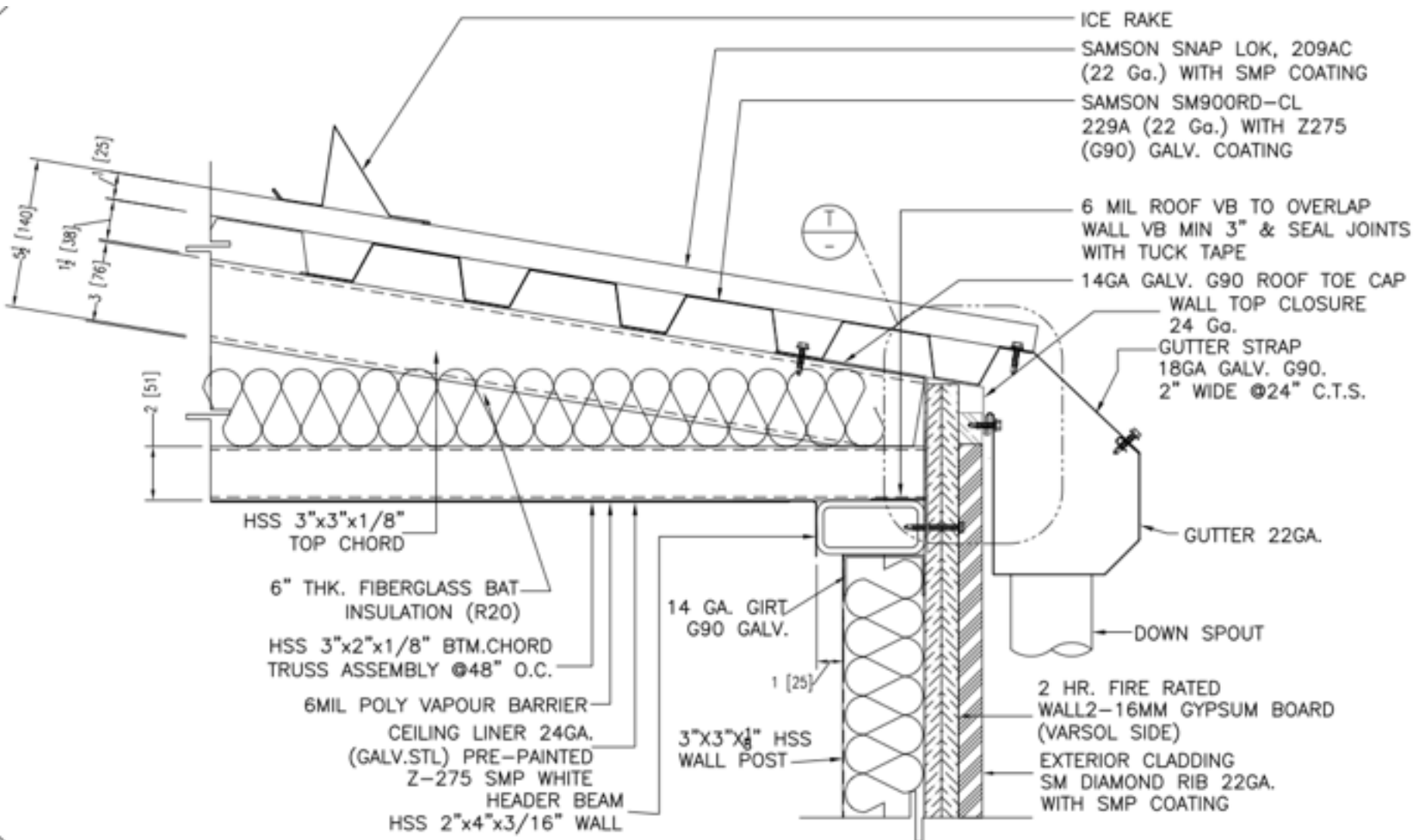
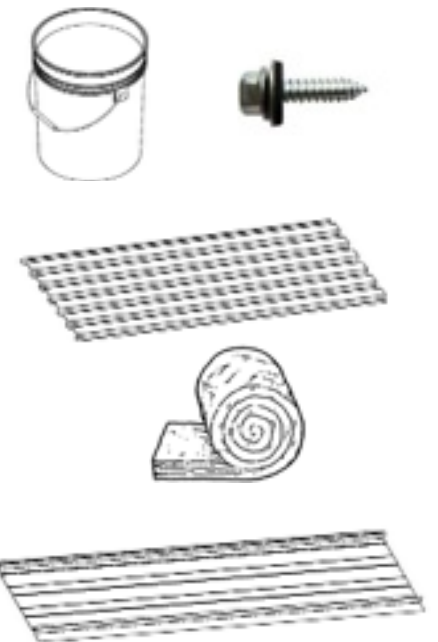


Product Architecture

[300-Envelope]



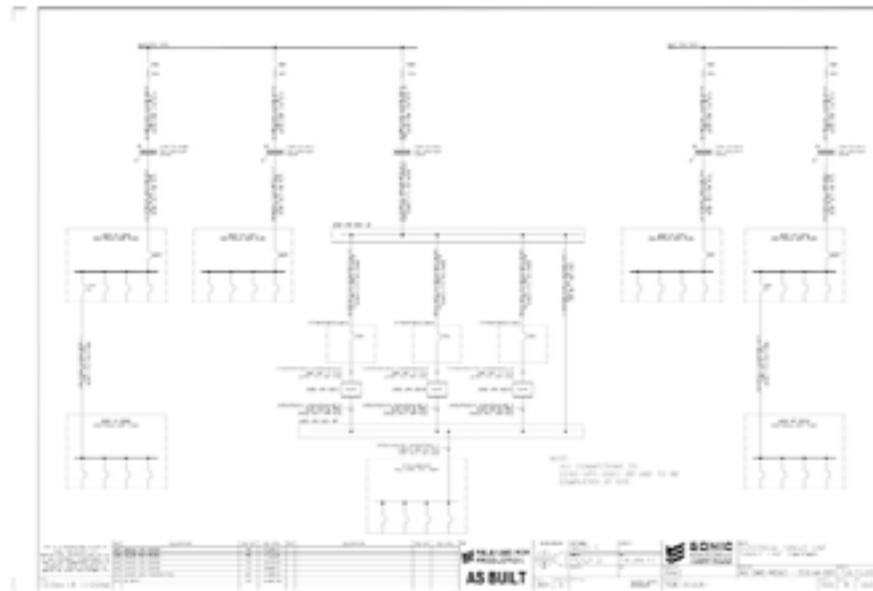
Typical Parts / Sub Assemblies





Product Architecture

[400-Electrical]



PANEL: 300-PNL-7001

DESCRIPTION: 300-PNL-7001

DESCRIPTION: 300-PNL-7001

LINE	WIRE	TYPE	DESCRIPTION	QUANTITY	UNIT	PRICE	TOTAL
100	1	UT	WIRELESS AND EMERGENCY LIGHTING	100	100	100	100
101	1	UT	WIRELESS AND EMERGENCY LIGHTING	100	100	100	100
102	1	UT	WIRELESS AND EMERGENCY LIGHTING	100	100	100	100
103	1	UT	WIRELESS AND EMERGENCY LIGHTING	100	100	100	100
104	1	UT	WIRELESS AND EMERGENCY LIGHTING	100	100	100	100
105	1	UT	WIRELESS AND EMERGENCY LIGHTING	100	100	100	100
106	1	UT	WIRELESS AND EMERGENCY LIGHTING	100	100	100	100
107	1	UT	WIRELESS AND EMERGENCY LIGHTING	100	100	100	100
108	1	UT	WIRELESS AND EMERGENCY LIGHTING	100	100	100	100
109	1	UT	WIRELESS AND EMERGENCY LIGHTING	100	100	100	100
110	1	UT	WIRELESS AND EMERGENCY LIGHTING	100	100	100	100
111	1	UT	WIRELESS AND EMERGENCY LIGHTING	100	100	100	100
112	1	UT	WIRELESS AND EMERGENCY LIGHTING	100	100	100	100
113	1	UT	WIRELESS AND EMERGENCY LIGHTING	100	100	100	100
114	1	UT	WIRELESS AND EMERGENCY LIGHTING	100	100	100	100
115	1	UT	WIRELESS AND EMERGENCY LIGHTING	100	100	100	100
116	1	UT	WIRELESS AND EMERGENCY LIGHTING	100	100	100	100
117	1	UT	WIRELESS AND EMERGENCY LIGHTING	100	100	100	100
118	1	UT	WIRELESS AND EMERGENCY LIGHTING	100	100	100	100
119	1	UT	WIRELESS AND EMERGENCY LIGHTING	100	100	100	100
120	1	UT	WIRELESS AND EMERGENCY LIGHTING	100	100	100	100

LINE	WIRE	TYPE	DESCRIPTION	QUANTITY	UNIT	PRICE	TOTAL
100	1	UT	WIRELESS AND EMERGENCY LIGHTING	100	100	100	100
101	1	UT	WIRELESS AND EMERGENCY LIGHTING	100	100	100	100
102	1	UT	WIRELESS AND EMERGENCY LIGHTING	100	100	100	100
103	1	UT	WIRELESS AND EMERGENCY LIGHTING	100	100	100	100
104	1	UT	WIRELESS AND EMERGENCY LIGHTING	100	100	100	100
105	1	UT	WIRELESS AND EMERGENCY LIGHTING	100	100	100	100
106	1	UT	WIRELESS AND EMERGENCY LIGHTING	100	100	100	100
107	1	UT	WIRELESS AND EMERGENCY LIGHTING	100	100	100	100
108	1	UT	WIRELESS AND EMERGENCY LIGHTING	100	100	100	100
109	1	UT	WIRELESS AND EMERGENCY LIGHTING	100	100	100	100
110	1	UT	WIRELESS AND EMERGENCY LIGHTING	100	100	100	100
111	1	UT	WIRELESS AND EMERGENCY LIGHTING	100	100	100	100
112	1	UT	WIRELESS AND EMERGENCY LIGHTING	100	100	100	100
113	1	UT	WIRELESS AND EMERGENCY LIGHTING	100	100	100	100
114	1	UT	WIRELESS AND EMERGENCY LIGHTING	100	100	100	100
115	1	UT	WIRELESS AND EMERGENCY LIGHTING	100	100	100	100
116	1	UT	WIRELESS AND EMERGENCY LIGHTING	100	100	100	100
117	1	UT	WIRELESS AND EMERGENCY LIGHTING	100	100	100	100
118	1	UT	WIRELESS AND EMERGENCY LIGHTING	100	100	100	100
119	1	UT	WIRELESS AND EMERGENCY LIGHTING	100	100	100	100
120	1	UT	WIRELESS AND EMERGENCY LIGHTING	100	100	100	100

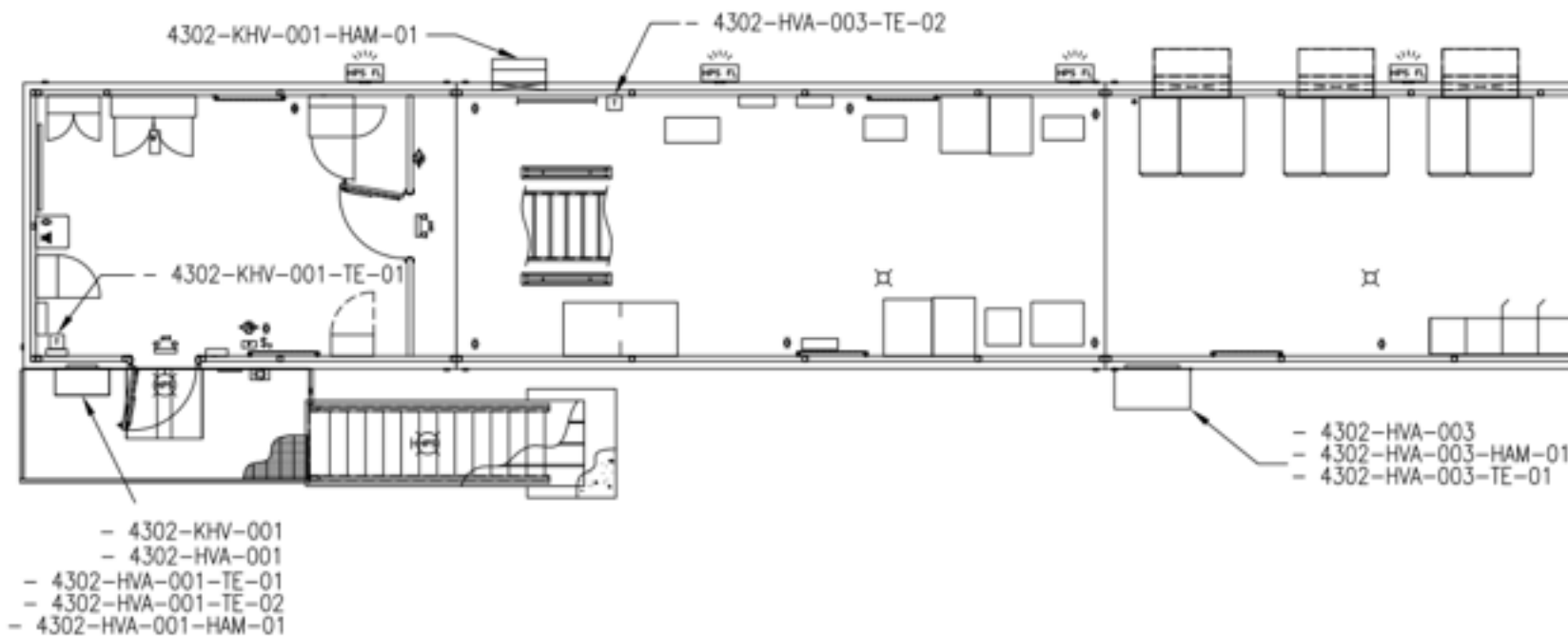
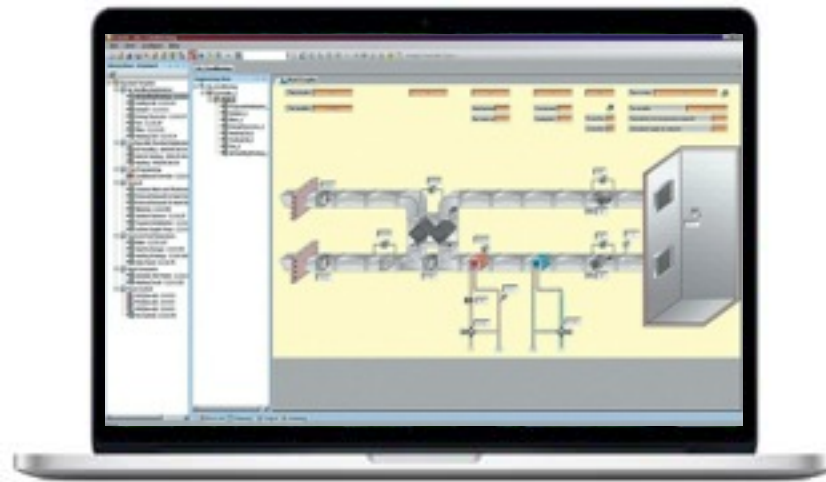
Typical Parts / Sub Assemblies



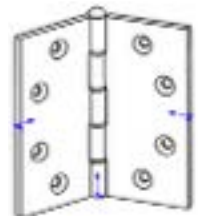


Product Architecture

[500-Mechanical]



Typical Parts / Sub Assemblies





Product Architecture

[2-3-4-5, A-B-C, I-II-III]

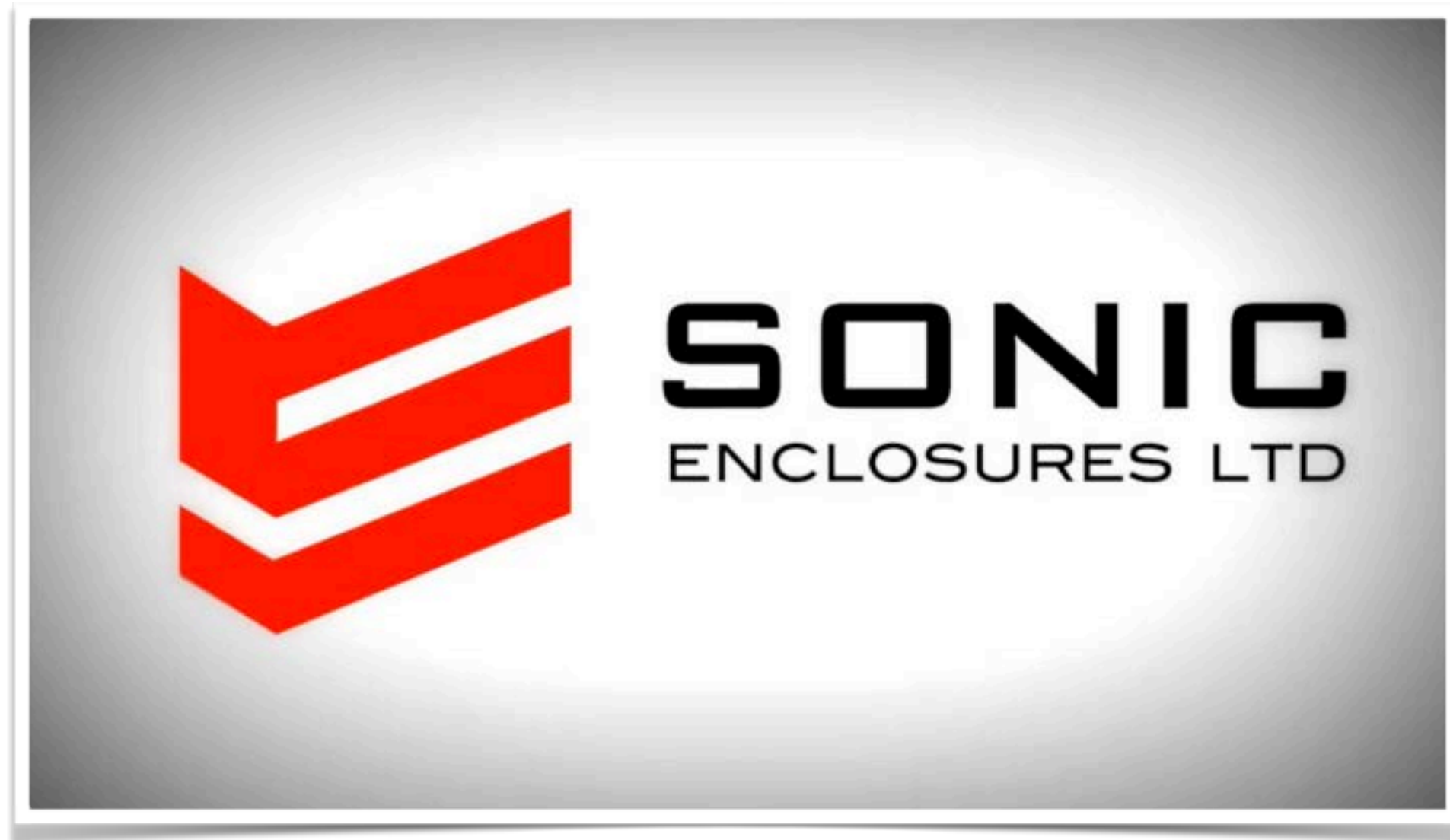
Descriptor	Purpose	Material Attributes	Material Handling	Tools & Techniques	EXAMPLE	SCHED RISK
000-Building Assembly	Functional Category	Complete Product	Koni's / Cranes / Trucks			
200-Struct & Frames		Cross Section, Grade, Finish	Crane, Fork Lift	Band Saw, Weld, Grind	C15 / C8 / ¼" Floor Plate	Moderate
300-Envelope		Thickness, GA, mil, Colour , Texture	Palette Jack, Hand Carry	Zipcut, screw, rivet, seal	Insulation/Poly/Cladding/Ceiling Liner/ Wall Liner	Low-Moderate
400-Electrical		Volts, Amps, NEMA, CSA	Hand Carry, Palette Jack	Wire cable cut, strip, label HShrink, label Lamicoid	TX, Panel, Lights, Access Control, Tek Cable	Highest
500-Mechanical		HVAC BTU's, Tray Dims, Profile and finish (Uni Strut), thread pitch	Hand carry, lift cart	Nut, bolt, redi-rod, uni-strut, mono bolt, riv-nut	HVAC Unit, Fans, Grills, Doors & Door Hardware, Tray, Unistrut, threaded fasteners	High
Descriptor	Purpose	Value \$	Lead Time	QTY		SCHED RISK
MCD- A	Material Class Designation	High \$	Long (6-8wks)	Low (1-2)		Highest
MCD- B		Med \$	Med (2-4wks)	Med (3-5)		Moderate
MCD- C		Low \$	Off the shelf	High (10+)		none
Descriptor	Purpose	Design	Supply	Warranty		SCHED RISK
Type I	Scope of Supply	Sonic	Sonic	*Sonic		Low
Type II		Customer/Sonic	Sonic	OEM		High
Type III		Customer	Customer	OEM		Very High



Tools & Systems

[Production Management]

- Production WEB Cams-Enable Time & Motion Studies - AMEC
<http://vimeo.com/101768016>





Tools & Systems

[Production Management]

- Production WEB Cams-Enable Time & Motion Studies - BECHTEL
<http://vimeo.com/101765300>





Tools & Systems

[Production Verification]

- iPad enables 360 videos of final product configurations- AMEC

<http://vimeo.com/101767950>





Tools & Systems

[Production Verification]

- iPad enables 360 videos of final product configurations- BECHTEL
<http://vimeo.com/101767768>

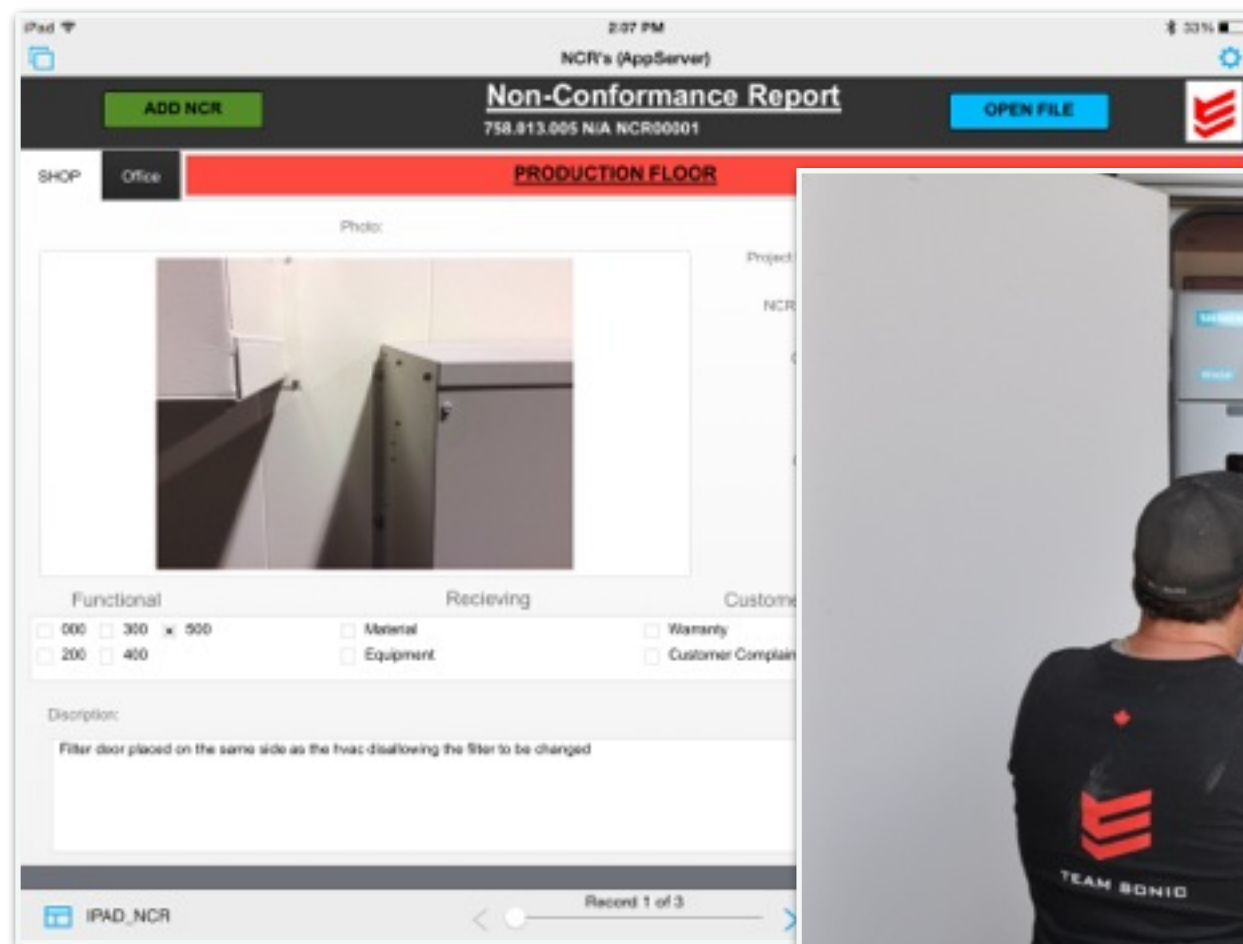




Tools & Systems

[Production Verification]

- iPad enables in-process inspections & NCR's





Our Experience & Strategy





Experience-[Customers]





Experience-[Products]





Sonic Synergy Joint Venture (SSJV)- Leading providers of eHouses in the Pacific Northwest

SSJV - Web Site & Press Release

- www.LNG-eHouse.com
- Official Press Release





SONIC
ENCLOSURES LTD

Synergy
ENGINEERING LTD.

Sonic Synergy Joint Venture (SSJV)- Leading providers of eHouses in the Pacific Northwest

Strategy- SSJV



Synergy
ENGINEERING LTD.

Prime Contractor, Produce eHouse shell and integrate all subs

Lead Electrical Engineering & Integration

ISKAY-SON
STEEL FABRICATORS LTD.

brenco
Metal Processing & Fabricating

HANSEN
INDUSTRIES LTD.

Synergy
ENGINEERING LTD.

CANNEPP

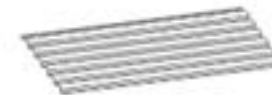
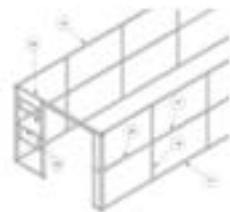
Supply of Structural Sub Assemblies

Supply of Structural Parts

Supply of Envelope Parts

Supply of Electrical Equipment

Supply of Mechanical Equipment





Sonic Synergy Joint Venture (SSJV)- Leading providers of eHouses in the Pacific Northwest

Closing Comments

We've Invested in:

- Our people, and it's paying dividends
- New Methodologies & Quality Management Systems which have improved our ability to exceed our customers' expectations
- Leveraging our experience and developing our strategic Joint Venture with Synergy Engineering to ensure these large scale programs are executed successfully

“At Sonic its all about **Our People, Our Capabilities & Our Experience**; and we look forward to being of service to you”





Sonic Synergy Joint Venture (SSJV)- Leading providers of eHouses in the Pacific Northwest

Thank You / Q&A



Appendix- Full Sized Pictures

Facilities

















Certifications



CERTIFICATE OF REGISTRATION

This is to certify that

Sonic Enclosures Ltd.

7127 Honeyman St., Delta, British Columbia V4G 1E2 Canada

operates a

Quality Management System

which complies with the requirements of

ISO 9001:2008

for the following scope of registration

The registration covers the Quality Management System for design and manufacturing of metallic enclosures for electrical, power and mechanical equipment.

Certificate No.: CERT-0078826
File No.: 1609556
Issue Date: April 16, 2014

Original Certification Date: May 4, 2011
Current Certification Date: May 3, 2014
Certificate Expiry Date: May 2, 2017

Chris Jouppi
President,
QMI-SAI Canada Limited

Samer Chaouk
Head of Policy, Risk and Certification



ISO 9001



Registered by:
SAI Global Certification Services Pty Ltd, 286 Sussex Street, Sydney NSW 2000 Australia with QMI-SAI Canada Limited, 20 Carlson Court, Suite 200,
Toronto, Ontario M9W 7K6 Canada (SAI GLOBAL). This registration is subject to the SAI Global Terms and Conditions for Certification. While all due care
and skill was exercised in carrying out this assessment, SAI Global accepts responsibility only for proven negligence. This certificate remains the property
of SAI Global and must be returned to them upon request.
To verify that this certificate is current, please refer to the SAI Global On-Line Certification Register: www.qmi-saiglobal.com/qmi_companies/





The CWB acknowledges that

Sonic Enclosures Ltd., West Bay

Unit #1, 8295 River Road , Delta, BC V4G 1B4 Canada

is certified to CSA Standard **W47.1**

“Certification of Companies for Fusion Welding of Steel”

in DIVISION 2

for the period **June 13, 2014 to July 12, 2015**

Company Code: SONWB1

Scope: Fabrication of mobile steel enclosures for industrial.

A handwritten signature in black ink, appearing to be 'A. Smith', written over a horizontal line.

Registrar

The product certification system operated by the Canadian Welding Bureau most closely resembles that described by ISO/IEC Guide 67, Conformity assessment — Fundamentals of product certification, System 6.



Accredited
CB-P/S
(Certification Body - Product/Services)

8260 Parkhill Drive, Milton, Ontario L9T 5V7
1-800-844-6790 | Int: 905-542-1312 | Fax: 905-542-1318
Email: info@cwbgroupp.org | Web: www.cwbgroupp.org





DET NORSKE VERITAS

TYPE APPROVAL CERTIFICATE

CERTIFICATE NO. S-5412
This Certificate consists of 3 pages

This is to certify that the
Offshore Service Container
with type designation(s)
20' Offshore Service Container

Manufactured by
Sonic Barrier Ltd.
Delta, BC V4G 1E2, Canada

is found to comply with
DNV 2.7-1 Offshore Containers
Det Norske Veritas Certification Note 2.7-2 Offshore Service Containers

Application
Control/Workshop Van
Group 2
Max. gross mass (kg) 12584
Hazardous zone Case-by-case
Fire rating of shell A-60

Place and date
Høvik, 2008-08-11
for DET NORSKE VERITAS AS

M. Valderhaug
Marianne Strand Valderhaug
Head of Section



Local Office
DNV Vancouver

This Certificate is valid until
2012-12-31

Anders Kirste Egge
Anders Kirste Egge
Surveyor

Notice: This Certificate is subject to terms and conditions overleaf. Any significant change in design or construction may render this Certificate invalid.
The validity date relates to the Type Approval Certificate and not to the approval of equipment/systems installed.

If any person suffers loss or damage which is proved to have been caused by any negligent act or omission of Det Norske Veritas, then Det Norske Veritas shall pay compensation to such person for his proved direct loss or damage. However, the compensation shall not exceed an amount equal to ten times the fee charged for the service in question, provided that the maximum compensation shall never exceed USD 2 million. In this provision "Det Norske Veritas" shall mean the Foundation Det Norske Veritas as well as all its subsidiaries, directors, officers, employees, agents and any other acting on behalf of Det Norske Veritas.



Certificate of Registration

This is to certify that QUASAR has certified:

Sonic Enclosures Ltd.

Plant & Design Office: 7127 Honeyman Street, Delta, BC V4G 1E2

to the Certification Standard:

CSA A660-10

"Certification of Manufacturers of Steel Building Systems"

Initial Registration
22 June 2011

Date of Issue
22 June 2014

Date of Expiry
22 June 2015

Certificate Number
SONIC0

Scope: Manufactures mobile enclosures integrating operating equipment for industrial applications.

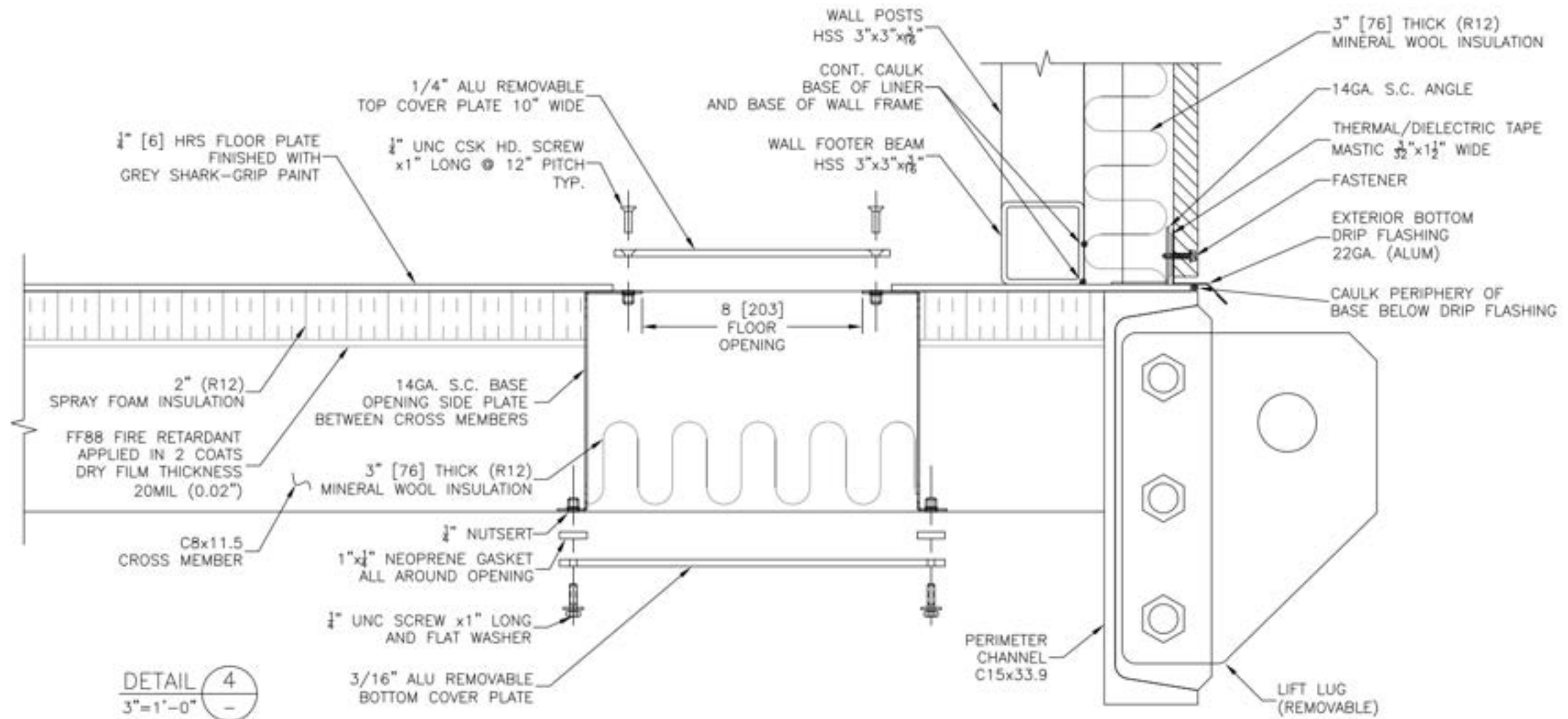


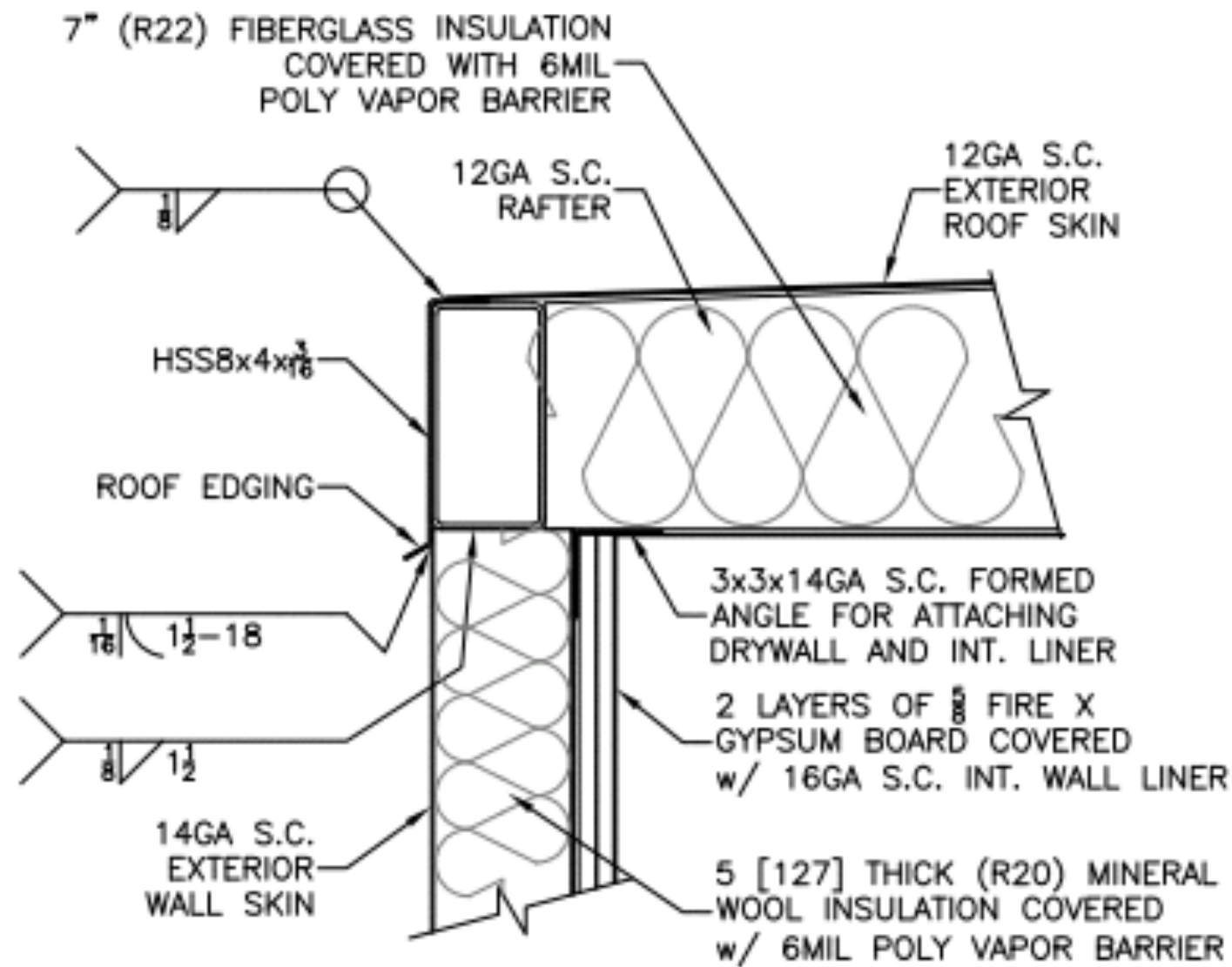
Refer to www.cwbgroup.org for current certification status.

A660 Cer – 2012-08

QUASAR, A Division of the CWB Group, 8260 Park Hill Drive, Milton, Ontario, Canada, L9T 5V7, Tel: 1-800-844-6790 / (905)-542-1312, Fax: (905) 542-1318, Web: www.cwbgroup.org

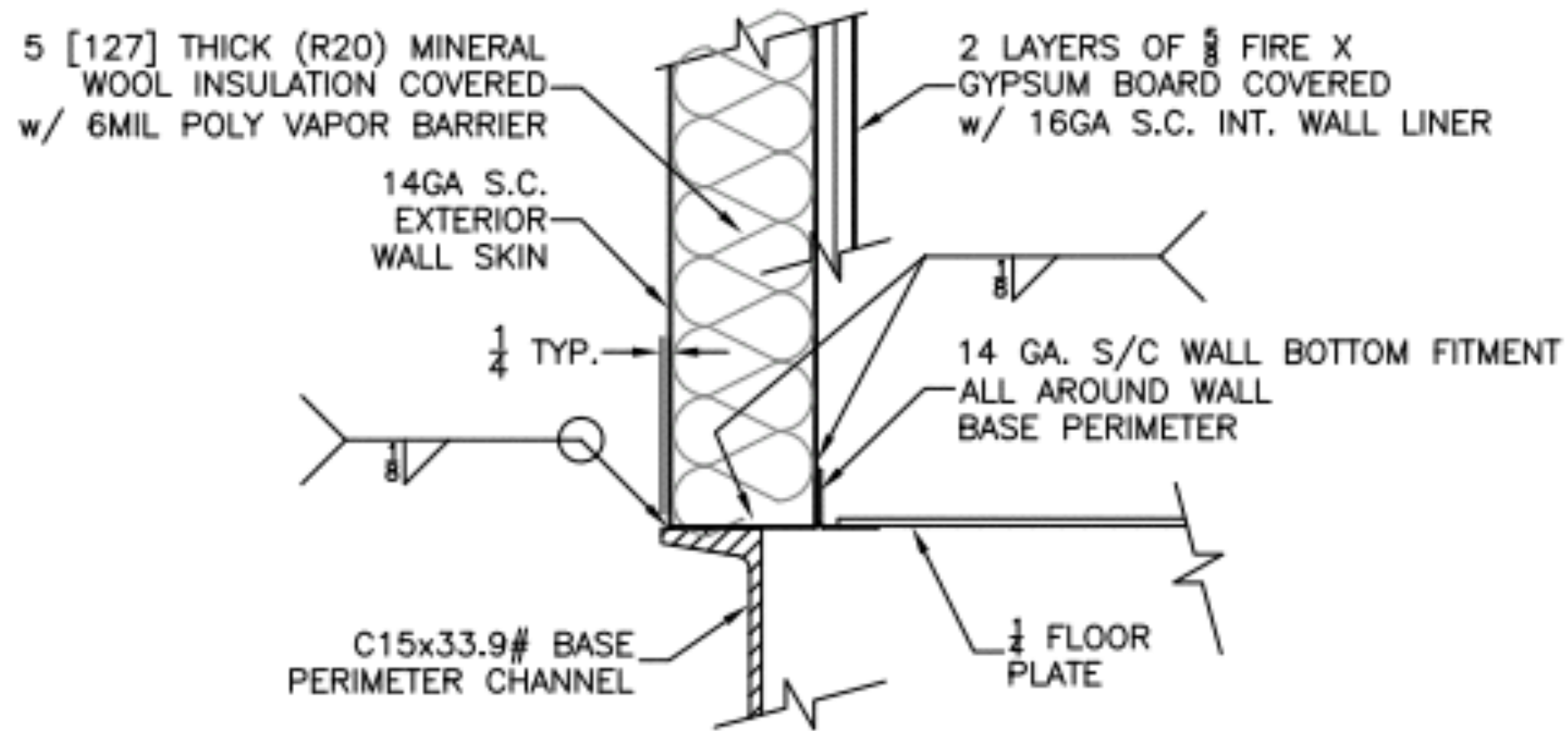
Product Architecture



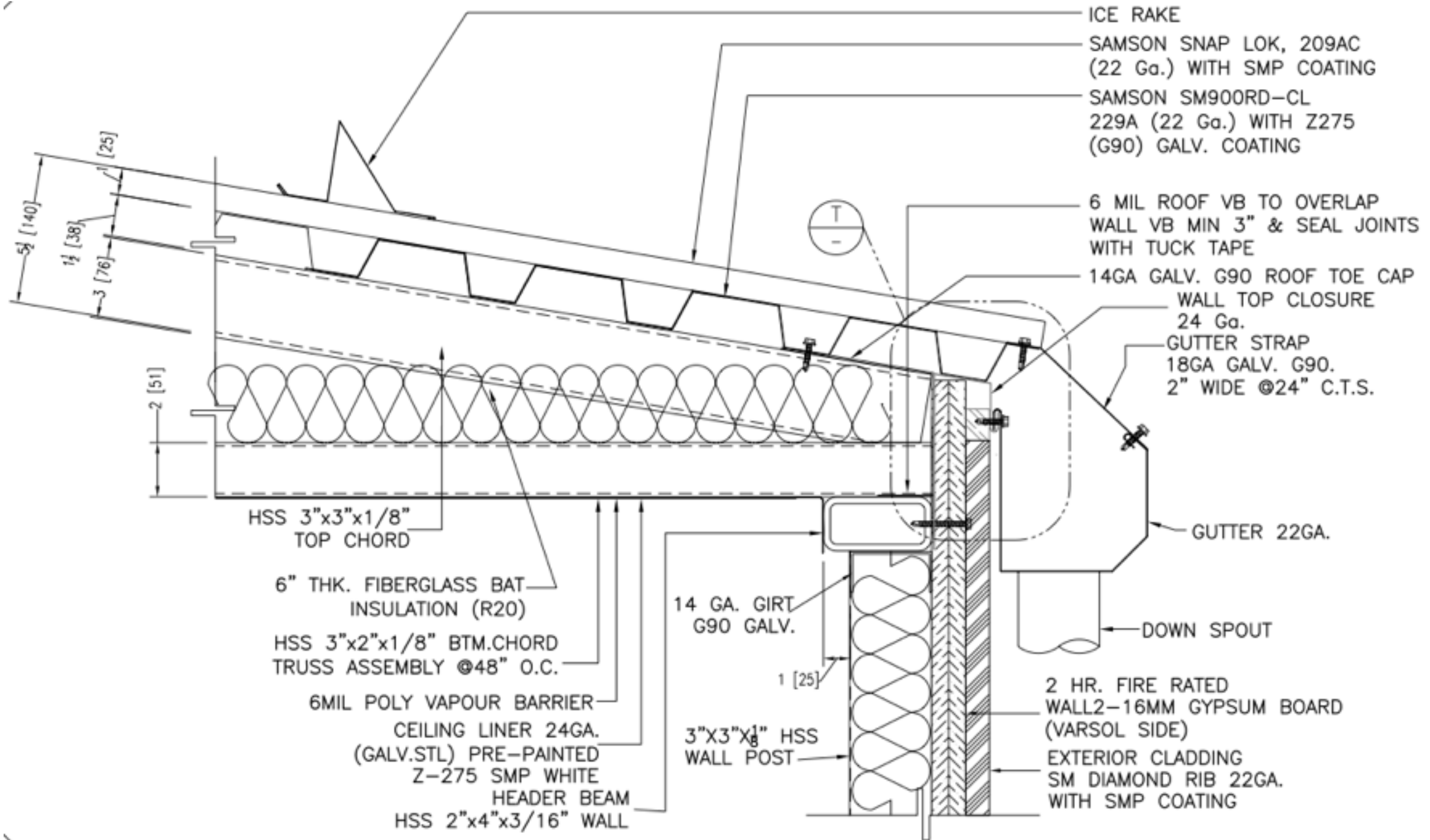


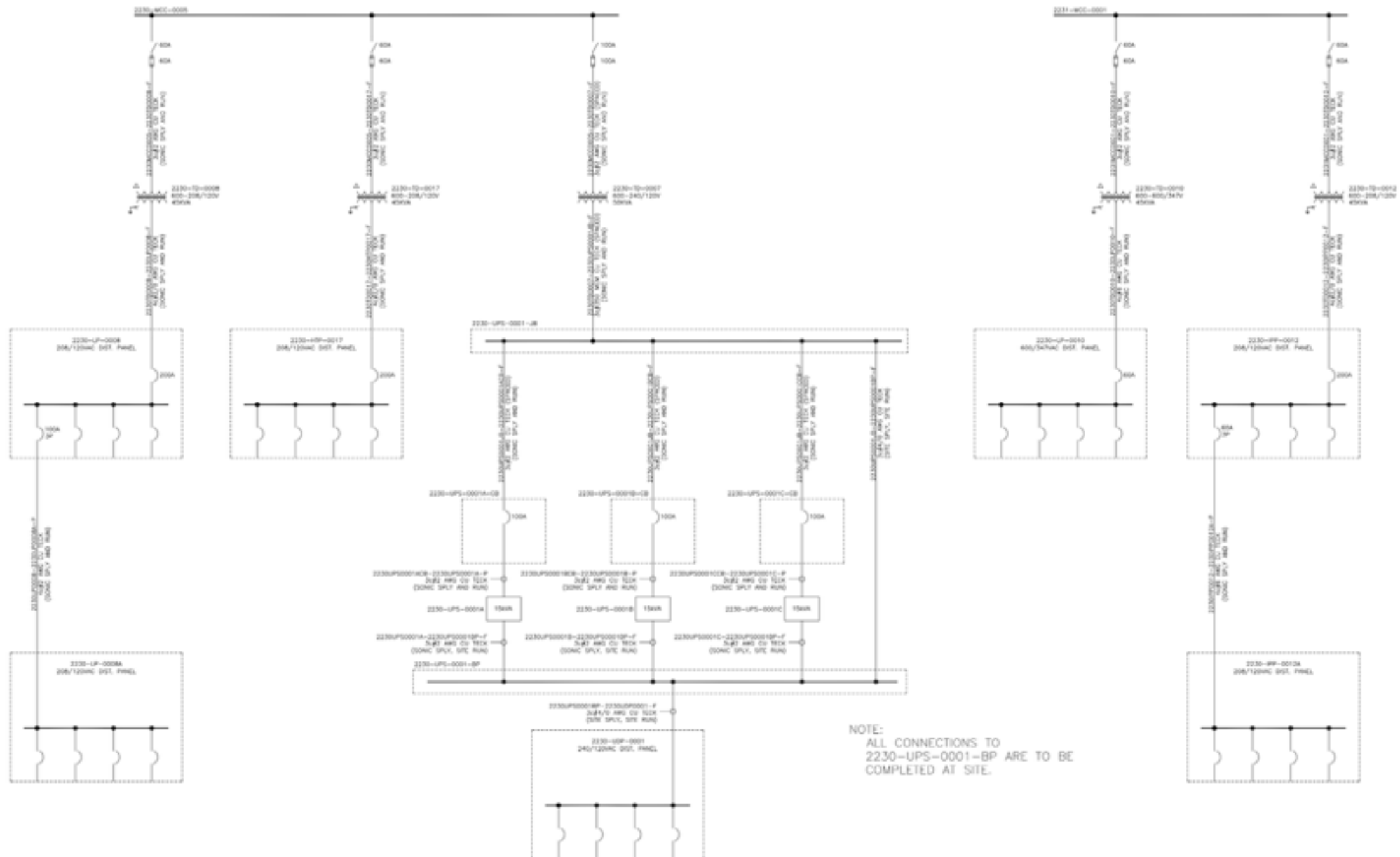
TYP WALL TO ROOF DETAIL $\frac{1}{2}$

1 1/2"=1'-0"



TYPICAL WALL TO BASE DETAIL $\frac{2}{2}$
 $1\ 1/2" = 1'-0"$





NOTE:
ALL CONNECTIONS TO
2230-UPS-0001-BP ARE TO BE
COMPLETED AT SITE.

THIS IS A PROPRIETARY DESIGN OF SONIC ENCLOSURES LTD. MANUFACTURING, REPRODUCTION OR USE OF ANY ASSEMBLY, SUB-ASSEMBLY OR PART IS NOT PERMISSIBLE EXCEPT IF EXPRESSLY PRIOR AUTHORIZED IN WRITING BY SONIC ENCLOSURES LTD.										REV										DESCRIPTION										REV BY										REV DATE										REV										DESCRIPTION										REV BY										REV DATE										REV										DESCRIPTION										REV BY										REV DATE										REV										DESCRIPTION										REV BY										REV DATE										REV										DESCRIPTION										REV BY										REV DATE										REV										DESCRIPTION										REV BY										REV DATE										REV										DESCRIPTION										REV BY										REV DATE										REV										DESCRIPTION										REV BY										REV DATE										REV										DESCRIPTION										REV BY										REV DATE										REV										DESCRIPTION										REV BY										REV DATE										REV										DESCRIPTION										REV BY										REV DATE										REV										DESCRIPTION										REV BY										REV DATE										REV										DESCRIPTION										REV BY										REV DATE										REV										DESCRIPTION										REV BY										REV DATE										REV										DESCRIPTION										REV BY										REV DATE										REV										DESCRIPTION										REV BY										REV DATE										REV										DESCRIPTION										REV BY										REV DATE										REV										DESCRIPTION										REV BY										REV DATE										REV										DESCRIPTION										REV BY										REV DATE										REV										DESCRIPTION										REV BY										REV DATE										REV										DESCRIPTION										REV BY										REV DATE										REV										DESCRIPTION										REV BY										REV DATE										REV										DESCRIPTION										REV BY										REV DATE										REV										DESCRIPTION										REV BY										REV DATE										REV										DESCRIPTION										REV BY										REV DATE										REV										DESCRIPTION										REV BY										REV DATE										REV										DESCRIPTION										REV BY										REV DATE										REV										DESCRIPTION										REV BY										REV DATE										REV										DESCRIPTION										REV BY										REV DATE										REV										DESCRIPTION										REV BY										REV DATE										REV										DESCRIPTION										REV BY										REV DATE										REV										DESCRIPTION										REV BY										REV DATE										REV										DESCRIPTION										REV BY										REV DATE										REV										DESCRIPTION										REV BY										REV DATE										REV										DESCRIPTION										REV BY										REV DATE										REV										DESCRIPTION										REV BY										REV DATE										REV										DESCRIPTION										REV BY										REV DATE										REV										DESCRIPTION										REV BY										REV DATE										REV										DESCRIPTION										REV BY										REV DATE										REV										DESCRIPTION										REV BY										REV DATE										REV										DESCRIPTION										REV BY										REV DATE										REV										DESCRIPTION										REV BY										REV DATE										REV										DESCRIPTION										REV BY										REV DATE										REV										DESCRIPTION										REV BY										REV DATE										REV										DESCRIPTION										REV BY										REV DATE										REV										DESCRIPTION										REV BY										REV DATE										REV										DESCRIPTION										REV BY										REV DATE										REV										DESCRIPTION										REV BY										REV DATE										REV										DESCRIPTION										REV BY										REV DATE										REV										DESCRIPTION										REV BY										REV DATE										REV										DESCRIPTION										REV BY										REV DATE										REV										DESCRIPTION										REV BY										REV DATE										REV										DESCRIPTION										REV BY										REV DATE										REV										DESCRIPTION										REV BY										REV DATE										REV										DESCRIPTION										REV BY										REV DATE										REV										DESCRIPTION										REV BY										REV DATE										REV										DESCRIPTION										REV BY										REV DATE										REV										DESCRIPTION										REV BY										REV DATE										REV										DESCRIPTION										REV BY										REV DATE										REV										DESCRIPTION										REV BY										REV DATE										REV										DESCRIPTION										REV BY										REV DATE										REV										DESCRIPTION										REV BY										REV DATE										REV										DESCRIPTION										REV BY										REV DATE										REV										DESCRIPTION										REV BY										REV DATE										REV										DESCRIPTION										REV BY										REV DATE										REV										DESCRIPTION										REV BY										REV DATE										REV										DESCRIPTION										REV BY										REV DATE										REV										DESCRIPTION										REV BY										REV DATE										REV										DESCRIPTION										REV BY										REV DATE										REV										DESCRIPTION										REV BY										REV DATE										REV										DESCRIPTION										REV BY										REV DATE										REV										DESCRIPTION										REV BY										REV DATE										REV										DESCRIPTION										REV BY										REV DATE										REV										DESCRIPTION										REV BY										REV DATE										REV										DESCRIPTION										REV BY										REV DATE										REV										DESCRIPTION										REV BY										REV DATE										REV										DESCRIPTION										REV BY										REV DATE										REV										DESCRIPTION										REV BY										REV DATE										REV										DESCRIPTION										REV BY										REV DATE										REV										DESCRIPTION										REV BY										REV DATE										REV										DESCRIPTION										REV BY										REV DATE										REV										DESCRIPTION										REV BY										REV DATE										REV										DESCRIPTION										REV BY										REV DATE										REV										DESCRIPTION										REV BY										REV DATE										REV										DESCRIPTION										REV BY										REV DATE										REV										DESCRIPTION										REV BY										REV DATE										REV										DESCRIPTION										REV BY										REV DATE										REV										DESCRIPTION										REV BY										REV DATE										REV										DESCRIPTION										REV BY										REV DATE										REV										DESCRIPTION										REV BY										REV DATE										REV										DESCRIPTION										REV BY										REV DATE										REV										DESCRIPTION										REV BY										REV DATE										REV										DESCRIPTION										REV BY										REV DATE										REV										DESCRIPTION										REV BY										REV DATE										REV										DESCRIPTION										REV BY										REV DATE										REV										DESCRIPTION										REV BY										REV DATE										REV										DESCRIPTION										REV BY										REV DATE										REV										DESCRIPTION										REV BY										REV DATE										REV										DESCRIPTION										REV BY										REV DATE										REV										DESCRIPTION										REV BY										REV DATE										REV										DESCRIPTION										REV BY										REV DATE										REV										DESCRIPTION										REV BY										REV DATE										REV										DESCRIPTION										REV BY										REV DATE										REV										DESCRIPTION										REV BY																			
--	--	--	--	--	--	--	--	--	--	-----	--	--	--	--	--	--	--	--	--	-------------	--	--	--	--	--	--	--	--	--	--------	--	--	--	--	--	--	--	--	--	----------	--	--	--	--	--	--	--	--	--	-----	--	--	--	--	--	--	--	--	--	-------------	--	--	--	--	--	--	--	--	--	--------	--	--	--	--	--	--	--	--	--	----------	--	--	--	--	--	--	--	--	--	-----	--	--	--	--	--	--	--	--	--	-------------	--	--	--	--	--	--	--	--	--	--------	--	--	--	--	--	--	--	--	--	----------	--	--	--	--	--	--	--	--	--	-----	--	--	--	--	--	--	--	--	--	-------------	--	--	--	--	--	--	--	--	--	--------	--	--	--	--	--	--	--	--	--	----------	--	--	--	--	--	--	--	--	--	-----	--	--	--	--	--	--	--	--	--	-------------	--	--	--	--	--	--	--	--	--	--------	--	--	--	--	--	--	--	--	--	----------	--	--	--	--	--	--	--	--	--	-----	--	--	--	--	--	--	--	--	--	-------------	--	--	--	--	--	--	--	--	--	--------	--	--	--	--	--	--	--	--	--	----------	--	--	--	--	--	--	--	--	--	-----	--	--	--	--	--	--	--	--	--	-------------	--	--	--	--	--	--	--	--	--	--------	--	--	--	--	--	--	--	--	--	----------	--	--	--	--	--	--	--	--	--	-----	--	--	--	--	--	--	--	--	--	-------------	--	--	--	--	--	--	--	--	--	--------	--	--	--	--	--	--	--	--	--	----------	--	--	--	--	--	--	--	--	--	-----	--	--	--	--	--	--	--	--	--	-------------	--	--	--	--	--	--	--	--	--	--------	--	--	--	--	--	--	--	--	--	----------	--	--	--	--	--	--	--	--	--	-----	--	--	--	--	--	--	--	--	--	-------------	--	--	--	--	--	--	--	--	--	--------	--	--	--	--	--	--	--	--	--	----------	--	--	--	--	--	--	--	--	--	-----	--	--	--	--	--	--	--	--	--	-------------	--	--	--	--	--	--	--	--	--	--------	--	--	--	--	--	--	--	--	--	----------	--	--	--	--	--	--	--	--	--	-----	--	--	--	--	--	--	--	--	--	-------------	--	--	--	--	--	--	--	--	--	--------	--	--	--	--	--	--	--	--	--	----------	--	--	--	--	--	--	--	--	--	-----	--	--	--	--	--	--	--	--	--	-------------	--	--	--	--	--	--	--	--	--	--------	--	--	--	--	--	--	--	--	--	----------	--	--	--	--	--	--	--	--	--	-----	--	--	--	--	--	--	--	--	--	-------------	--	--	--	--	--	--	--	--	--	--------	--	--	--	--	--	--	--	--	--	----------	--	--	--	--	--	--	--	--	--	-----	--	--	--	--	--	--	--	--	--	-------------	--	--	--	--	--	--	--	--	--	--------	--	--	--	--	--	--	--	--	--	----------	--	--	--	--	--	--	--	--	--	-----	--	--	--	--	--	--	--	--	--	-------------	--	--	--	--	--	--	--	--	--	--------	--	--	--	--	--	--	--	--	--	----------	--	--	--	--	--	--	--	--	--	-----	--	--	--	--	--	--	--	--	--	-------------	--	--	--	--	--	--	--	--	--	--------	--	--	--	--	--	--	--	--	--	----------	--	--	--	--	--	--	--	--	--	-----	--	--	--	--	--	--	--	--	--	-------------	--	--	--	--	--	--	--	--	--	--------	--	--	--	--	--	--	--	--	--	----------	--	--	--	--	--	--	--	--	--	-----	--	--	--	--	--	--	--	--	--	-------------	--	--	--	--	--	--	--	--	--	--------	--	--	--	--	--	--	--	--	--	----------	--	--	--	--	--	--	--	--	--	-----	--	--	--	--	--	--	--	--	--	-------------	--	--	--	--	--	--	--	--	--	--------	--	--	--	--	--	--	--	--	--	----------	--	--	--	--	--	--	--	--	--	-----	--	--	--	--	--	--	--	--	--	-------------	--	--	--	--	--	--	--	--	--	--------	--	--	--	--	--	--	--	--	--	----------	--	--	--	--	--	--	--	--	--	-----	--	--	--	--	--	--	--	--	--	-------------	--	--	--	--	--	--	--	--	--	--------	--	--	--	--	--	--	--	--	--	----------	--	--	--	--	--	--	--	--	--	-----	--	--	--	--	--	--	--	--	--	-------------	--	--	--	--	--	--	--	--	--	--------	--	--	--	--	--	--	--	--	--	----------	--	--	--	--	--	--	--	--	--	-----	--	--	--	--	--	--	--	--	--	-------------	--	--	--	--	--	--	--	--	--	--------	--	--	--	--	--	--	--	--	--	----------	--	--	--	--	--	--	--	--	--	-----	--	--	--	--	--	--	--	--	--	-------------	--	--	--	--	--	--	--	--	--	--------	--	--	--	--	--	--	--	--	--	----------	--	--	--	--	--	--	--	--	--	-----	--	--	--	--	--	--	--	--	--	-------------	--	--	--	--	--	--	--	--	--	--------	--	--	--	--	--	--	--	--	--	----------	--	--	--	--	--	--	--	--	--	-----	--	--	--	--	--	--	--	--	--	-------------	--	--	--	--	--	--	--	--	--	--------	--	--	--	--	--	--	--	--	--	----------	--	--	--	--	--	--	--	--	--	-----	--	--	--	--	--	--	--	--	--	-------------	--	--	--	--	--	--	--	--	--	--------	--	--	--	--	--	--	--	--	--	----------	--	--	--	--	--	--	--	--	--	-----	--	--	--	--	--	--	--	--	--	-------------	--	--	--	--	--	--	--	--	--	--------	--	--	--	--	--	--	--	--	--	----------	--	--	--	--	--	--	--	--	--	-----	--	--	--	--	--	--	--	--	--	-------------	--	--	--	--	--	--	--	--	--	--------	--	--	--	--	--	--	--	--	--	----------	--	--	--	--	--	--	--	--	--	-----	--	--	--	--	--	--	--	--	--	-------------	--	--	--	--	--	--	--	--	--	--------	--	--	--	--	--	--	--	--	--	----------	--	--	--	--	--	--	--	--	--	-----	--	--	--	--	--	--	--	--	--	-------------	--	--	--	--	--	--	--	--	--	--------	--	--	--	--	--	--	--	--	--	----------	--	--	--	--	--	--	--	--	--	-----	--	--	--	--	--	--	--	--	--	-------------	--	--	--	--	--	--	--	--	--	--------	--	--	--	--	--	--	--	--	--	----------	--	--	--	--	--	--	--	--	--	-----	--	--	--	--	--	--	--	--	--	-------------	--	--	--	--	--	--	--	--	--	--------	--	--	--	--	--	--	--	--	--	----------	--	--	--	--	--	--	--	--	--	-----	--	--	--	--	--	--	--	--	--	-------------	--	--	--	--	--	--	--	--	--	--------	--	--	--	--	--	--	--	--	--	----------	--	--	--	--	--	--	--	--	--	-----	--	--	--	--	--	--	--	--	--	-------------	--	--	--	--	--	--	--	--	--	--------	--	--	--	--	--	--	--	--	--	----------	--	--	--	--	--	--	--	--	--	-----	--	--	--	--	--	--	--	--	--	-------------	--	--	--	--	--	--	--	--	--	--------	--	--	--	--	--	--	--	--	--	----------	--	--	--	--	--	--	--	--	--	-----	--	--	--	--	--	--	--	--	--	-------------	--	--	--	--	--	--	--	--	--	--------	--	--	--	--	--	--	--	--	--	----------	--	--	--	--	--	--	--	--	--	-----	--	--	--	--	--	--	--	--	--	-------------	--	--	--	--	--	--	--	--	--	--------	--	--	--	--	--	--	--	--	--	----------	--	--	--	--	--	--	--	--	--	-----	--	--	--	--	--	--	--	--	--	-------------	--	--	--	--	--	--	--	--	--	--------	--	--	--	--	--	--	--	--	--	----------	--	--	--	--	--	--	--	--	--	-----	--	--	--	--	--	--	--	--	--	-------------	--	--	--	--	--	--	--	--	--	--------	--	--	--	--	--	--	--	--	--	----------	--	--	--	--	--	--	--	--	--	-----	--	--	--	--	--	--	--	--	--	-------------	--	--	--	--	--	--	--	--	--	--------	--	--	--	--	--	--	--	--	--	----------	--	--	--	--	--	--	--	--	--	-----	--	--	--	--	--	--	--	--	--	-------------	--	--	--	--	--	--	--	--	--	--------	--	--	--	--	--	--	--	--	--	----------	--	--	--	--	--	--	--	--	--	-----	--	--	--	--	--	--	--	--	--	-------------	--	--	--	--	--	--	--	--	--	--------	--	--	--	--	--	--	--	--	--	----------	--	--	--	--	--	--	--	--	--	-----	--	--	--	--	--	--	--	--	--	-------------	--	--	--	--	--	--	--	--	--	--------	--	--	--	--	--	--	--	--	--	----------	--	--	--	--	--	--	--	--	--	-----	--	--	--	--	--	--	--	--	--	-------------	--	--	--	--	--	--	--	--	--	--------	--	--	--	--	--	--	--	--	--	----------	--	--	--	--	--	--	--	--	--	-----	--	--	--	--	--	--	--	--	--	-------------	--	--	--	--	--	--	--	--	--	--------	--	--	--	--	--	--	--	--	--	----------	--	--	--	--	--	--	--	--	--	-----	--	--	--	--	--	--	--	--	--	-------------	--	--	--	--	--	--	--	--	--	--------	--	--	--	--	--	--	--	--	--	----------	--	--	--	--	--	--	--	--	--	-----	--	--	--	--	--	--	--	--	--	-------------	--	--	--	--	--	--	--	--	--	--------	--	--	--	--	--	--	--	--	--	----------	--	--	--	--	--	--	--	--	--	-----	--	--	--	--	--	--	--	--	--	-------------	--	--	--	--	--	--	--	--	--	--------	--	--	--	--	--	--	--	--	--	----------	--	--	--	--	--	--	--	--	--	-----	--	--	--	--	--	--	--	--	--	-------------	--	--	--	--	--	--	--	--	--	--------	--	--	--	--	--	--	--	--	--	----------	--	--	--	--	--	--	--	--	--	-----	--	--	--	--	--	--	--	--	--	-------------	--	--	--	--	--	--	--	--	--	--------	--	--	--	--	--	--	--	--	--	----------	--	--	--	--	--	--	--	--	--	-----	--	--	--	--	--	--	--	--	--	-------------	--	--	--	--	--	--	--	--	--	--------	--	--	--	--	--	--	--	--	--	----------	--	--	--	--	--	--	--	--	--	-----	--	--	--	--	--	--	--	--	--	-------------	--	--	--	--	--	--	--	--	--	--------	--	--	--	--	--	--	--	--	--	----------	--	--	--	--	--	--	--	--	--	-----	--	--	--	--	--	--	--	--	--	-------------	--	--	--	--	--	--	--	--	--	--------	--	--	--	--	--	--	--	--	--	----------	--	--	--	--	--	--	--	--	--	-----	--	--	--	--	--	--	--	--	--	-------------	--	--	--	--	--	--	--	--	--	--------	--	--	--	--	--	--	--	--	--	----------	--	--	--	--	--	--	--	--	--	-----	--	--	--	--	--	--	--	--	--	-------------	--	--	--	--	--	--	--	--	--	--------	--	--	--	--	--	--	--	--	--	----------	--	--	--	--	--	--	--	--	--	-----	--	--	--	--	--	--	--	--	--	-------------	--	--	--	--	--	--	--	--	--	--------	--	--	--	--	--	--	--	--	--	----------	--	--	--	--	--	--	--	--	--	-----	--	--	--	--	--	--	--	--	--	-------------	--	--	--	--	--	--	--	--	--	--------	--	--	--	--	--	--	--	--	--	----------	--	--	--	--	--	--	--	--	--	-----	--	--	--	--	--	--	--	--	--	-------------	--	--	--	--	--	--	--	--	--	--------	--	--	--	--	--	--	--	--	--	----------	--	--	--	--	--	--	--	--	--	-----	--	--	--	--	--	--	--	--	--	-------------	--	--	--	--	--	--	--	--	--	--------	--	--	--	--	--	--	--	--	--	----------	--	--	--	--	--	--	--	--	--	-----	--	--	--	--	--	--	--	--	--	-------------	--	--	--	--	--	--	--	--	--	--------	--	--	--	--	--	--	--	--	--	----------	--	--	--	--	--	--	--	--	--	-----	--	--	--	--	--	--	--	--	--	-------------	--	--	--	--	--	--	--	--	--	--------	--	--	--	--	--	--	--	--	--	----------	--	--	--	--	--	--	--	--	--	-----	--	--	--	--	--	--	--	--	--	-------------	--	--	--	--	--	--	--	--	--	--------	--	--	--	--	--	--	--	--	--	----------	--	--	--	--	--	--	--	--	--	-----	--	--	--	--	--	--	--	--	--	-------------	--	--	--	--	--	--	--	--	--	--------	--	--	--	--	--	--	--	--	--	----------	--	--	--	--	--	--	--	--	--	-----	--	--	--	--	--	--	--	--	--	-------------	--	--	--	--	--	--	--	--	--	--------	--	--	--	--	--	--	--	--	--	----------	--	--	--	--	--	--	--	--	--	-----	--	--	--	--	--	--	--	--	--	-------------	--	--	--	--	--	--	--	--	--	--------	--	--	--	--	--	--	--	--	--	----------	--	--	--	--	--	--	--	--	--	-----	--	--	--	--	--	--	--	--	--	-------------	--	--	--	--	--	--	--	--	--	--------	--	--	--	--	--	--	--	--	--	----------	--	--	--	--	--	--	--	--	--	-----	--	--	--	--	--	--	--	--	--	-------------	--	--	--	--	--	--	--	--	--	--------	--	--	--	--	--	--	--	--	--	----------	--	--	--	--	--	--	--	--	--	-----	--	--	--	--	--	--	--	--	--	-------------	--	--	--	--	--	--	--	--	--	--------	--	--	--	--	--	--	--	--	--	----------	--	--	--	--	--	--	--	--	--	-----	--	--	--	--	--	--	--	--	--	-------------	--	--	--	--	--	--	--	--	--	--------	--	--	--	--	--	--	--	--	--	----------	--	--	--	--	--	--	--	--	--	-----	--	--	--	--	--	--	--	--	--	-------------	--	--	--	--	--	--	--	--	--	--------	--	--	--	--	--	--	--	--	--	----------	--	--	--	--	--	--	--	--	--	-----	--	--	--	--	--	--	--	--	--	-------------	--	--	--	--	--	--	--	--	--	--------	--	--	--	--	--	--	--	--	--	----------	--	--	--	--	--	--	--	--	--	-----	--	--	--	--	--	--	--	--	--	-------------	--	--	--	--	--	--	--	--	--	--------	--	--	--	--	--	--	--	--	--	----------	--	--	--	--	--	--	--	--	--	-----	--	--	--	--	--	--	--	--	--	-------------	--	--	--	--	--	--	--	--	--	--------	--	--	--	--	--	--	--	--	--	----------	--	--	--	--	--	--	--	--	--	-----	--	--	--	--	--	--	--	--	--	-------------	--	--	--	--	--	--	--	--	--	--------	--	--	--	--	--	--	--	--	--	----------	--	--	--	--	--	--	--	--	--	-----	--	--	--	--	--	--	--	--	--	-------------	--	--	--	--	--	--	--	--	--	--------	--	--	--	--	--	--	--	--	--	----------	--	--	--	--	--	--	--	--	--	-----	--	--	--	--	--	--	--	--	--	-------------	--	--	--	--	--	--	--	--	--	--------	--	--	--	--	--	--	--	--	--	----------	--	--	--	--	--	--	--	--	--	-----	--	--	--	--	--	--	--	--	--	-------------	--	--	--	--	--	--	--	--	--	--------	--	--	--	--	--	--	--	--	--	----------	--	--	--	--	--	--	--	--	--	-----	--	--	--	--	--	--	--	--	--	-------------	--	--	--	--	--	--	--	--	--	--------	--	--	--	--	--	--	--	--	--	----------	--	--	--	--	--	--	--	--	--	-----	--	--	--	--	--	--	--	--	--	-------------	--	--	--	--	--	--	--	--	--	--------	--	--	--	--	--	--	--	--	--	----------	--	--	--	--	--	--	--	--	--	-----	--	--	--	--	--	--	--	--	--	-------------	--	--	--	--	--	--	--	--	--	--------	--	--	--	--	--	--	--	--	--	----------	--	--	--	--	--	--	--	--	--	-----	--	--	--	--	--	--	--	--	--	-------------	--	--	--	--	--	--	--	--	--	--------	--	--	--	--	--	--	--	--	--	----------	--	--	--	--	--	--	--	--	--	-----	--	--	--	--	--	--	--	--	--	-------------	--	--	--	--	--	--	--	--	--	--------	--	--	--	--	--	--	--	--	--	----------	--	--	--	--	--	--	--	--	--	-----	--	--	--	--	--	--	--	--	--	-------------	--	--	--	--	--	--	--	--	--	--------	--	--	--	--	--	--	--	--	--	----------	--	--	--	--	--	--	--	--	--	-----	--	--	--	--	--	--	--	--	--	-------------	--	--	--	--	--	--	--	--	--	--------	--	--	--	--	--	--	--	--	--	----------	--	--	--	--	--	--	--	--	--	-----	--	--	--	--	--	--	--	--	--	-------------	--	--	--	--	--	--	--	--	--	--------	--	--	--	--	--	--	--	--	--	----------	--	--	--	--	--	--	--	--	--	-----	--	--	--	--	--	--	--	--	--	-------------	--	--	--	--	--	--	--	--	--	--------	--	--	--	--	--	--	--	--	--	----------	--	--	--	--	--	--	--	--	--	-----	--	--	--	--	--	--	--	--	--	-------------	--	--	--	--	--	--	--	--	--	--------	--	--	--	--	--	--	--	--	--	----------	--	--	--	--	--	--	--	--	--	-----	--	--	--	--	--	--	--	--	--	-------------	--	--	--	--	--	--	--	--	--	--------	--	--	--	--	--	--	--	--	--	----------	--	--	--	--	--	--	--	--	--	-----	--	--	--	--	--	--	--	--	--	-------------	--	--	--	--	--	--	--	--	--	--------	--	--	--	--	--	--	--	--	--	----------	--	--	--	--	--	--	--	--	--	-----	--	--	--	--	--	--	--	--	--	-------------	--	--	--	--	--	--	--	--	--	--------	--	--	--	--	--	--	--	--	--	----------	--	--	--	--	--	--	--	--	--	-----	--	--	--	--	--	--	--	--	--	-------------	--	--	--	--	--	--	--	--	--	--------	--	--	--	--	--	--	--	--	--	----------	--	--	--	--	--	--	--	--	--	-----	--	--	--	--	--	--	--	--	--	-------------	--	--	--	--	--	--	--	--	--	--------	--	--	--	--	--	--	--	--	--	----------	--	--	--	--	--	--	--	--	--	-----	--	--	--	--	--	--	--	--	--	-------------	--	--	--	--	--	--	--	--	--	--------	--	--	--	--	--	--	--	--	--	----------	--	--	--	--	--	--	--	--	--	-----	--	--	--	--	--	--	--	--	--	-------------	--	--	--	--	--	--	--	--	--	--------	--	--	--	--	--	--	--	--	--	----------	--	--	--	--	--	--	--	--	--	-----	--	--	--	--	--	--	--	--	--	-------------	--	--	--	--	--	--	--	--	--	--------	--	--	--	--	--	--	--	--	--	----------	--	--	--	--	--	--	--	--	--	-----	--	--	--	--	--	--	--	--	--	-------------	--	--	--	--	--	--	--	--	--	--------	--	--	--	--	--	--	--	--	--	----------	--	--	--	--	--	--	--	--	--	-----	--	--	--	--	--	--	--	--	--	-------------	--	--	--	--	--	--	--	--	--	--------	--	--	--	--	--	--	--	--	--	----------	--	--	--	--	--	--	--	--	--	-----	--	--	--	--	--	--	--	--	--	-------------	--	--	--	--	--	--	--	--	--	--------	--	--	--	--	--	--	--	--	--	----------	--	--	--	--	--	--	--	--	--	-----	--	--	--	--	--	--	--	--	--	-------------	--	--	--	--	--	--	--	--	--	--------	--	--	--	--	--	--	--	--	--	----------	--	--	--	--	--	--	--	--	--	-----	--	--	--	--	--	--	--	--	--	-------------	--	--	--	--	--	--	--	--	--	--------	--	--	--	--	--	--	--	--	--	----------	--	--	--	--	--	--	--	--	--	-----	--	--	--	--	--	--	--	--	--	-------------	--	--	--	--	--	--	--	--	--	--------	--	--	--	--	--	--	--	--	--	----------	--	--	--	--	--	--	--	--	--	-----	--	--	--	--	--	--	--	--	--	-------------	--	--	--	--	--	--	--	--	--	--------	--	--	--	--	--	--	--	--	--	--	--	--	--	--	--	--	--	--	--



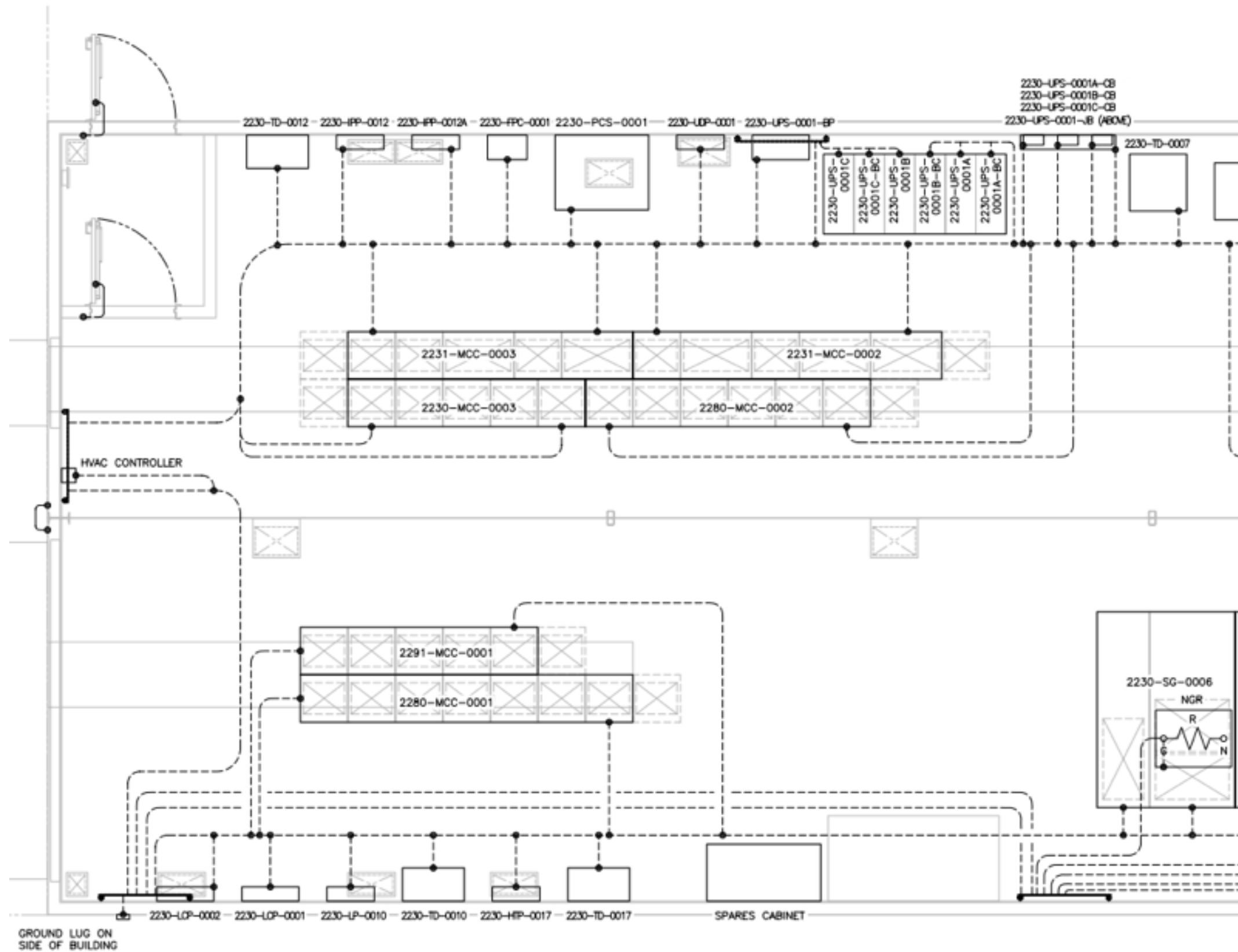
PANEL: 300-PNL-7001

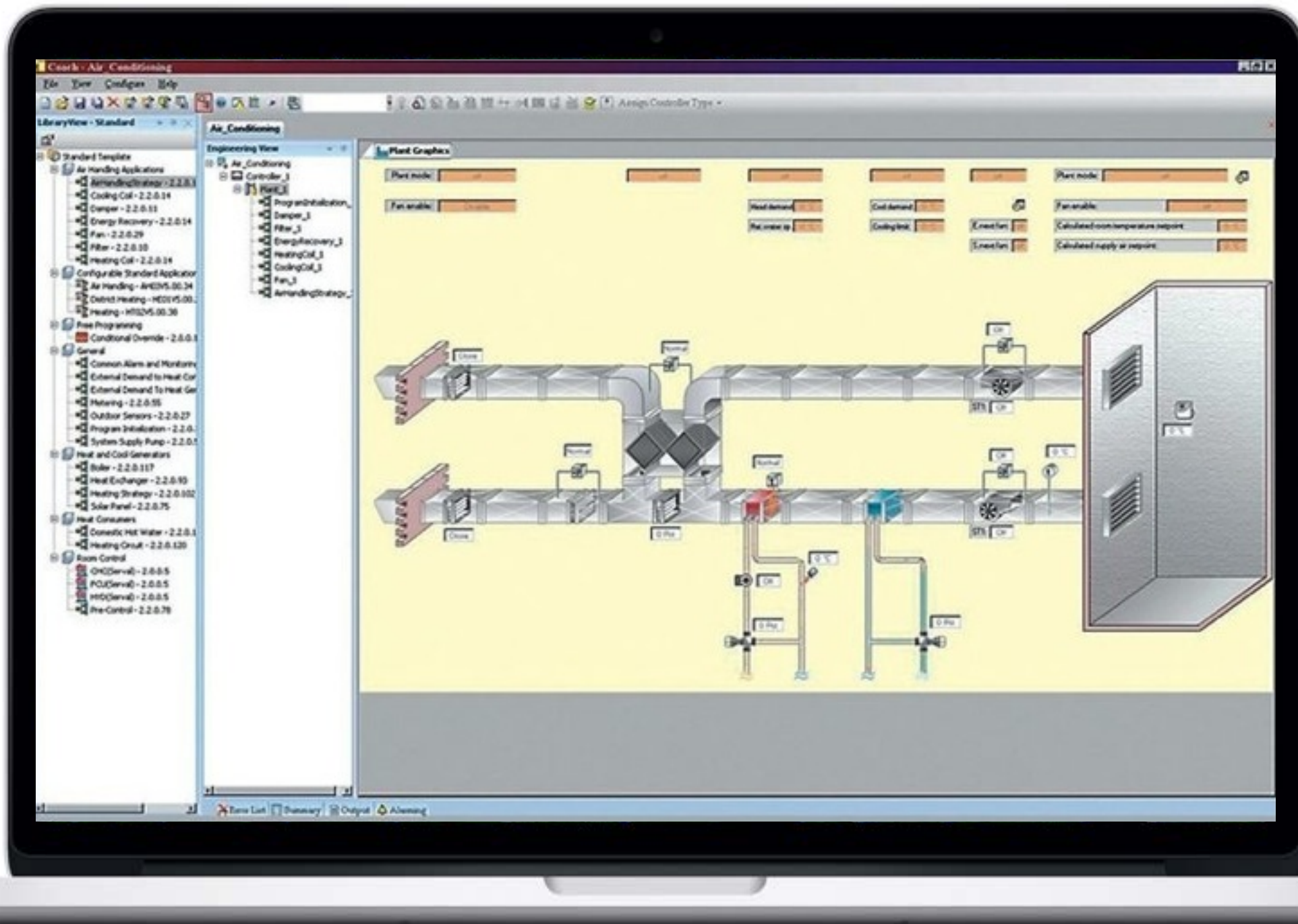
VOLTAGE: 208 /120V 3 PHASE, 4W, 60Hz, 10kA

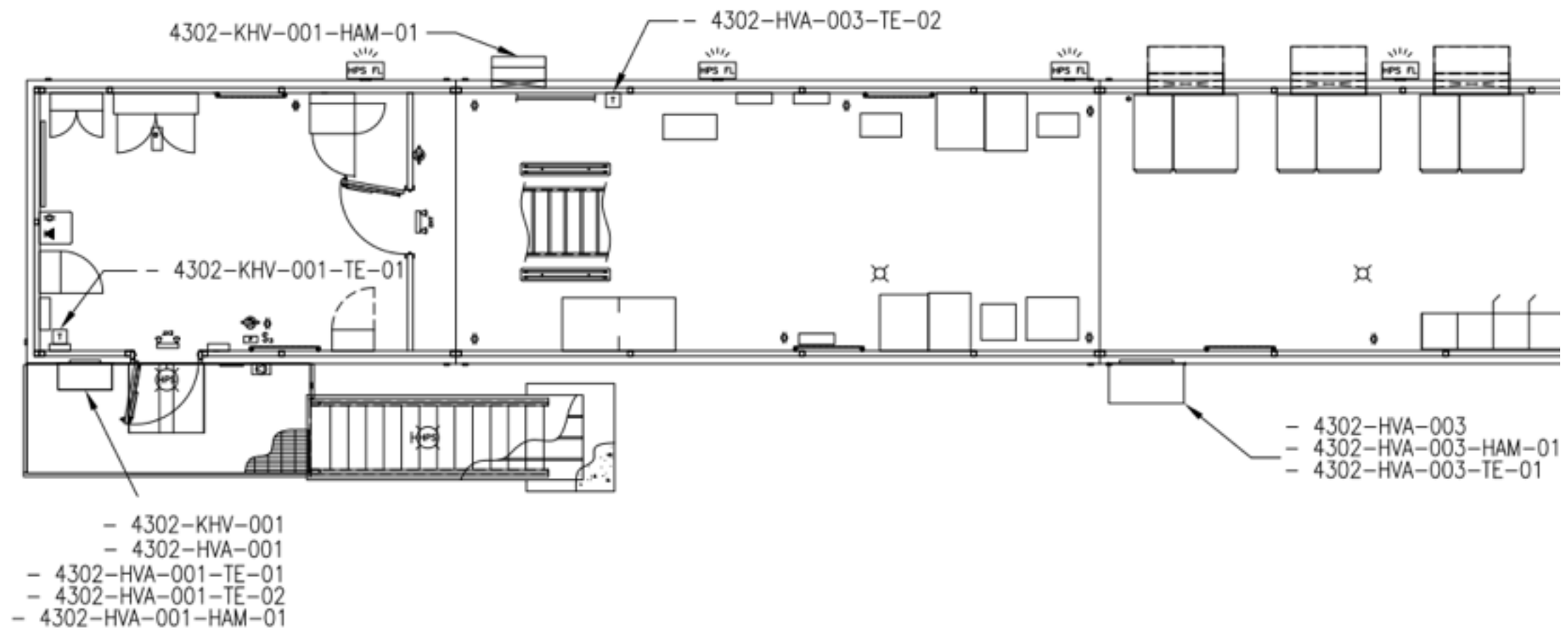
LOAD SUMMARY				TOTAL	DEMAND	PANEL INFORMATION:				
LT	LIGHTING LOAD			4200	100%	4200	MINIMUM PANEL SIZE	225	AMPS	
AC	A/C LOAD			0	100%	0	PANEL MOUNTING	SURFACE, NEMA 1		
HT	HEATING LOAD			19400	100%	19400	PANEL COLOR	GREY		
M	MECHANICAL LOAD			15200	80%	12160	GROUND BAR	NORMAL		
RC	RECEPTACLES			3600	60%	2160	DOOR COVER	YES		
EQ	EQUIPMENT LOAD			4247.5	100%	4248	BUSSING	COPPER		
TOTAL PANEL WATTAGE				46647.5		42168	BREAKER TYPE	BOLT-ON		
TOTAL AMPERAGE				129		117	c/w MAIN BREAKER	YES, 225A		
LOAD/PHASE	A	B	C	MANUFACTURER						EATON, 42CCT
VA	14787.5	17580	14280							

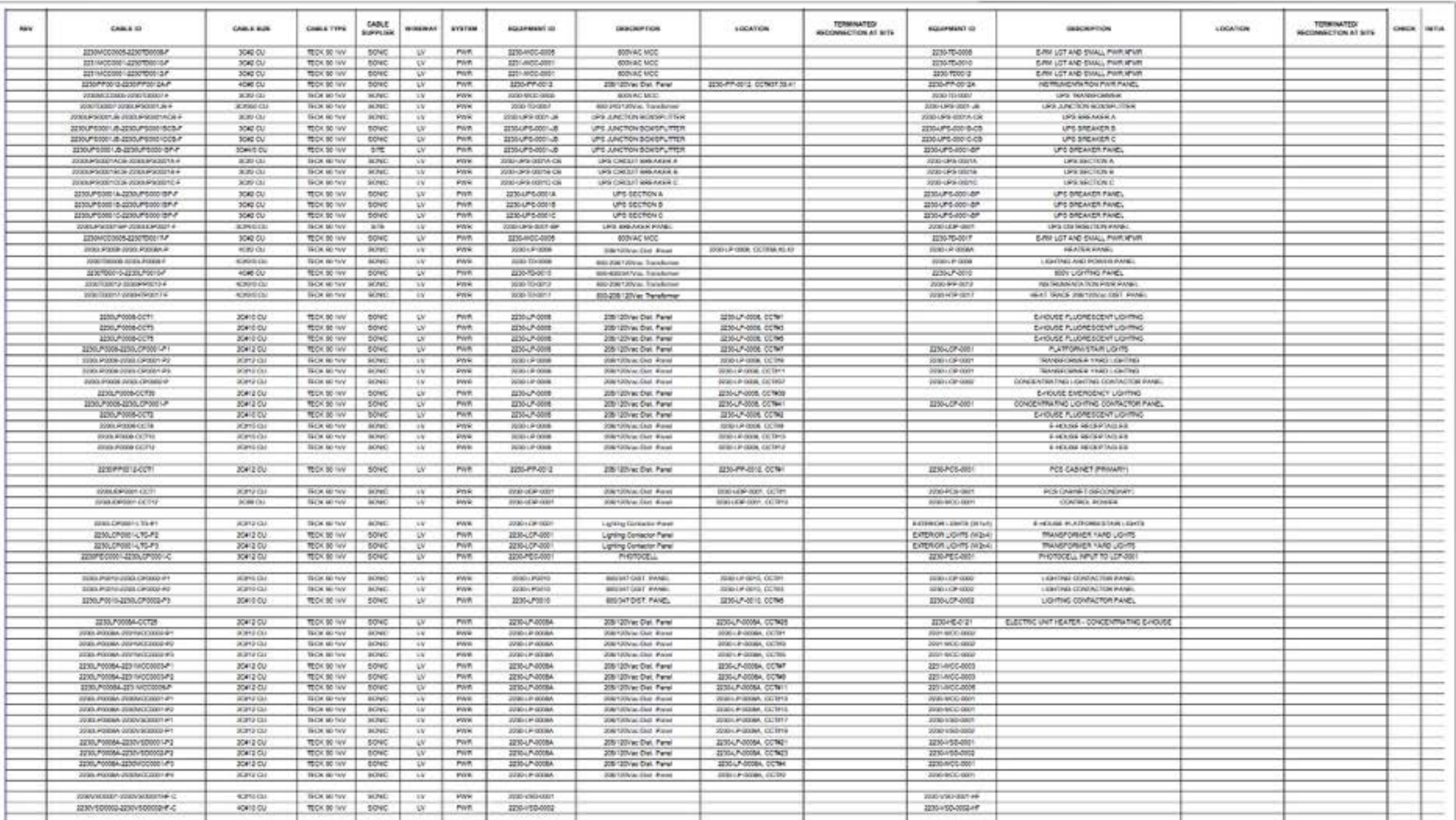
LOAD	NOTE	TYPE	DESCRIPTION	COND SIZE	BRKR	CCT	PH	CCT	BRKR	COND SIZE	DESCRIPTION	TYPE	NOTE	LOAD
900		LT	INTERIOR AND EMERGENCY LIGHTING	#12	15A	1	A	2	15A	#12	RECEPTACLES (2)	RC		1200
300		LT	EXTERIOR LTG AND PHOTOCELL	#12	15A	3	B	4	15A	#12	RECEPTACLES (2)	RC		1200
1000	1	LT	L1A TAKE UP LIGHTING		15A	5	C	6	15A	#12	DESK RECEPTACLE	RC		1200
1000	1	LT	L1A TAKE UP LIGHTING		15A	7	A	8	60A	#4	300-HVA-7001 HVAC UNIT	M		15000
1000	1	LT	L1A TAKE UP LIGHTING		15A	9	B	10						
200	1	HT	L3 - 410 HEATER		15A	11	C	12	3P					
600	1	EQ	SUPPRESSION SOLENOID		15A	13	A	14	15A	#12	300-PRU-7001	M		200
3000	1	HT	WATER DISTRIBUTION SHED HEATER		30A	15	B	16	15A	#12	MCC SPACE HEATERS	HT		1200
400	1	EQ	300-XTR-7002 FAN		15A	17	C	18	15A	#12	300-HVA-7001-CNTRL HVAC CONTROL	EQ		600
7.5	1	EQ	300-XTR-7002 SOURCE #2		15A	19	A	20	60A	#3	UPS	EQ		2640
					15A	21	B	22						
					15A	23	C	24	3P					
					15A	25	A	26	15A					
					15A	27	B	28	15A					
					15A	29	C	30	15A					
					15A	31	A	32	60A	#4	300-PRU-7001-HE PRESSURIZATION FAN HEATER	HT		15000
					15A	33	B	34						
					15A	35	C	36	3P					
					15A	37	A	38	15A					
					15A	39	B	40	15A					
					15A	41	C	42	15A					

NOTES:
 1 POWER FEEDS TO BE SUPPLIED AND RUN AT SITE
 2
 3









Experience-Projects



Snamprogetti / Husky Sunrise Metallurgical Laboratory



Rio Tinto Alcan / Bechtel Double Steam Plant



DnV Certified ROV Launch System



US Navy Disaster Relief Gen-sets







Bechtel / Rio Tinto Alcan EHouses



Amec Red Chris Mines EHouses

