



*"Powering Industry for over 40
years"*



Opening & Outline

- Company History
- Outline
 - Our People
 - Our Capabilities
 - Our Experience & Strategy
- Closing Comments
- Q&A



Powering Industry for over 40 years



Company History

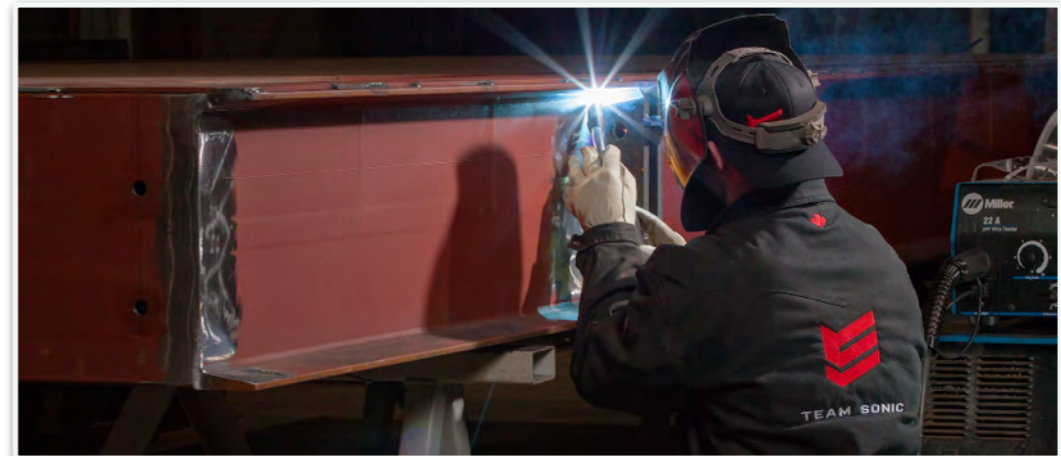
- 1970's - Sound research then "Sonic Barrier"
- 1980's - Forestry legislation led to development of sound proof operator enclosures for pulp and paper mills
- 1990's - Products expanded to: People, mechanical & electrical enclosures
- 2000's - Steady growth & capabilities expansion





Detailed Outline

- **Our People** “Who we are and why we are proud to serve industry.”
- **Our Capabilities** “Our credentials and how we perform our work”
- **Our Experience & Strategy** “Our experience, product portfolio, and supply chain strategy”



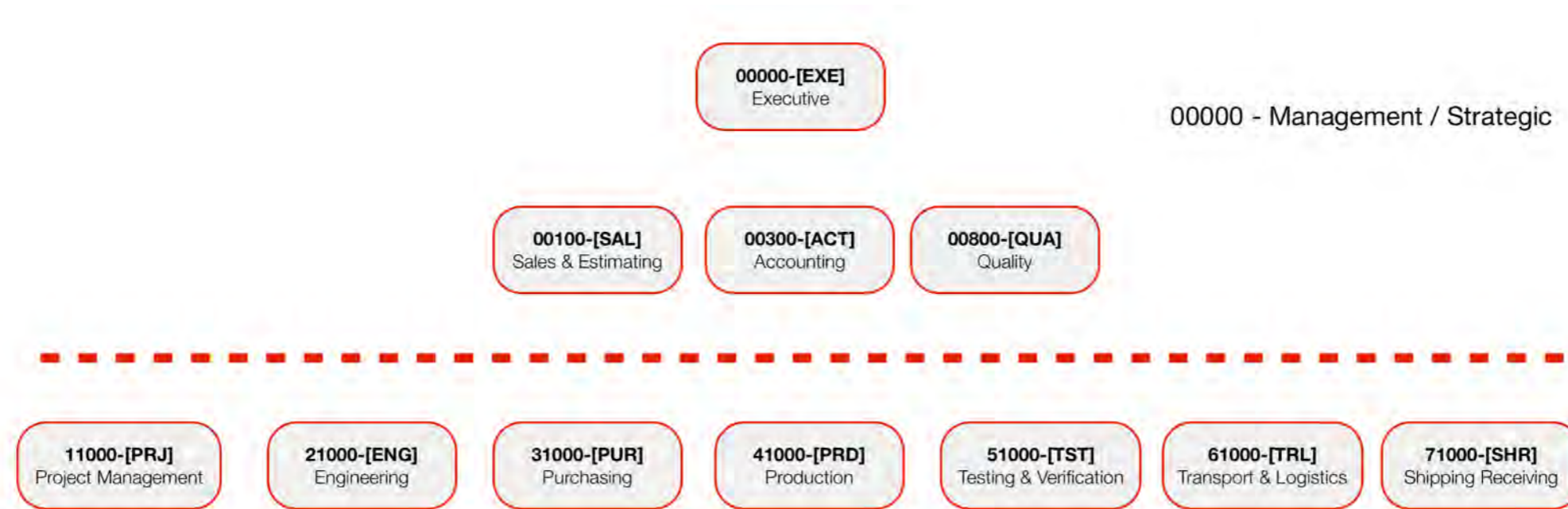


Our People





Organizational Chart



Management / Strategic

- Matei Ghelesel, President & COO
- Stan King, Director of Sales
- Sohrab Jilavi, Sales & Estimating
- Paul von Huene, Alberta Sales
- Lavinia Frentiu, Senior Accountant
- Debbie Rutherford, Controller
- Nathan Boldt, Quality Manager

Technical / Operational

- Paul Stopp, Engineering Manager
- Karen Regehr, Purchasing Manager
- Aaron Ma, Production Manager (Electrical)
- Kurtis / Evan , Production Manager (Mechanical)
- Chris King, Testing & Verification
- Andrew Charles, Transport & Logistics
- Chico Kumar, Shipping / Receiving



Vision

- To be North America's Industry leader in delivering engineered modular enclosure solutions.
- **People will be proud to work at Sonic-** *"We strive to create opportunities for our people to learn and grow and we will reward success"*
- **Customers will ask more of us** *"By studying the needs of our customers and delivering on all of our commitments Sonic will be an integral part of their success"*
- **We will be regarded as integral to industry** *"We will play an active role in developing our industrial base and participate in projects that contribute to growing our economy"*



Values

SAFETY *“We hold paramount the health and safety of our people”*

QUALITY *“We don’t ship hardware, we ship our reputation. We take pride in the craftsmanship of our products”*

INTEGRITY *“We conduct ourselves with honesty, fairness and operate in a transparent manner to instill confidence in our customers”*

EXCELLENCE *“We work collaboratively, we seek to innovate, we set high standards, we thrive on challenges and we celebrate our accomplishments”*





Performance Incentive Plan

PERFORMANCE INCENTIVE PLAN "Attitude & Pride Drive Results"

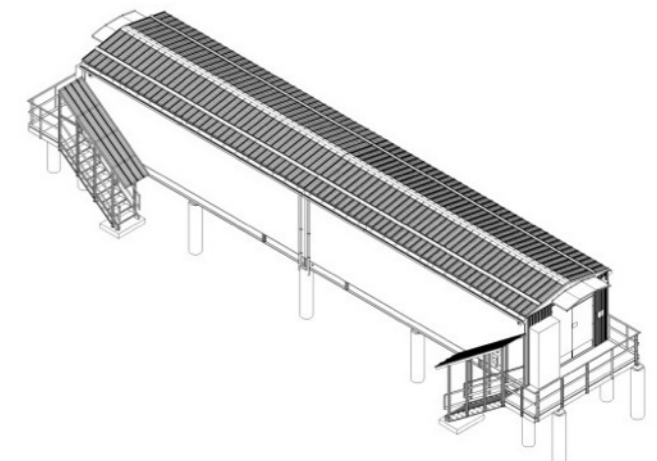
- SONIC VALUES** *Demonstrating the Sonic Values on a daily basis is the most important component of the new PIP; 32% of the overall grading comes from these 8 key attributes. This is rooted in the belief that attitude and pride drive results; if we can change our thinking then our actions will quickly follow suit*
- SONIC QMS** *"Sonic Enclosures is an ISO 9001 certified company that requires the company to embrace continuous learning and maintain its certification on an annual basis. The PIP has been designed to provide alignment to our quality goals. This component of the PIP is worth 28% of the overall grading*
- SONIC PRODUCT ARCHITECTURE** *Sonic's products and corresponding engineering designs and drawing packages are divided into functional categories. These categories have been selected based on methodologies used by the Army & Navy which provide alignment to the raw materials, processes and tools used to create the sub-assembly of the building. 22% of the overall grade for the PIP is based on technical knowledge*



400 – Electrical Factory Acceptance Test				Summary		REV 00E	
Project	Bechtel Rio Tinto Alcan Klemat Smelter Modernization Project			Unit #	5321		
Customer P.O.	25363 000 PDR ASBP 0003			Sonic Project #:	810.12.015		
	SCN# 02320 (reference)			Date:	14 SEPT 2013		
Section	Parameters Inspected - (I/FA/TS)	Inspected By/Date	Section	Parameters Inspected - (I/FA/TS)	Inspected By/Date	Equipment List	ID Tag
1.0	Verify that all equipment installed is correct (incl. labels)	Sept 12, 2013	8.0	Verify that inspected voltages are achieved throughout the electrical system (incl. voltage drop)	Sept 12, 2013	1. Midget	N/A
1.0	Verify that the as built configuration matches the General Arrangement (incl. wiring diagrams)	Sept 12, 2013	9.0	Verify that all electrical equipment functions in accordance with design (incl. I/O)	Sept 12, 2013	2. Motor Motor	N/A
2.0	Verify that all power distribution tags and bus connections are adequately tagged (incl. busbar)	Sept 12, 2013	10.0	Verify that all electrical equipment functions in accordance with design (incl. I/O)	Sept 12, 2013	3. Torque Wrench	N/A
3.0	Verify that all power distribution tags and bus connections are adequately tagged (incl. busbar)	Sept 12, 2013	11.0	Verify that all electrical equipment functions in accordance with design (incl. I/O)	Sept 12, 2013	4. Measuring Tape	N/A
4.0	Verify that all power distribution tags and bus connections are adequately tagged (incl. busbar)	Sept 12, 2013	12.0	Verify that all electrical equipment functions in accordance with design (incl. I/O)	Sept 12, 2013	5. Digital Camera	N/A
5.0	Verify that all power distribution tags and bus connections are adequately tagged (incl. busbar)	Sept 12, 2013	13.0	Verify that all electrical equipment functions in accordance with design (incl. I/O)	Sept 12, 2013	6. Clock	N/A
6.0	Verify that all power distribution tags and bus connections are adequately tagged (incl. busbar)	Sept 12, 2013	14.0	Verify that all electrical equipment functions in accordance with design (incl. I/O)	Sept 12, 2013	7. Pencil	N/A
7.0	Verify that all power distribution tags and bus connections are adequately tagged (incl. busbar)	Sept 12, 2013	15.0	Verify that all electrical equipment functions in accordance with design (incl. I/O)	Sept 12, 2013		
8.0	Verify that all power distribution tags and bus connections are adequately tagged (incl. busbar)	Sept 12, 2013	16.0	Verify that all electrical equipment functions in accordance with design (incl. I/O)	Sept 12, 2013		
9.0	Verify that all power distribution tags and bus connections are adequately tagged (incl. busbar)	Sept 12, 2013	17.0	Verify that all electrical equipment functions in accordance with design (incl. I/O)	Sept 12, 2013		
10.0	Verify that all power distribution tags and bus connections are adequately tagged (incl. busbar)	Sept 12, 2013	18.0	Verify that all electrical equipment functions in accordance with design (incl. I/O)	Sept 12, 2013		

NER-00233 to be closed within 1-2 weeks of shipment.

Sign-offs: Project Manager: Ann Gonzalez, Inspector: [Signature]





Town halls & Proud Employees

- At Sonic we believe in an open and transparent work environment so we conduct town halls on a quarterly basis as a minimum.
- Our most recent employee survey had over 85% of our staff score an 8 or better on their level of pride to work @ Sonic.
- “Attitude & Pride Drive Results” has become one of our mantras and our customers have certainly felt the positive changes we’ve made over the past 2 years.





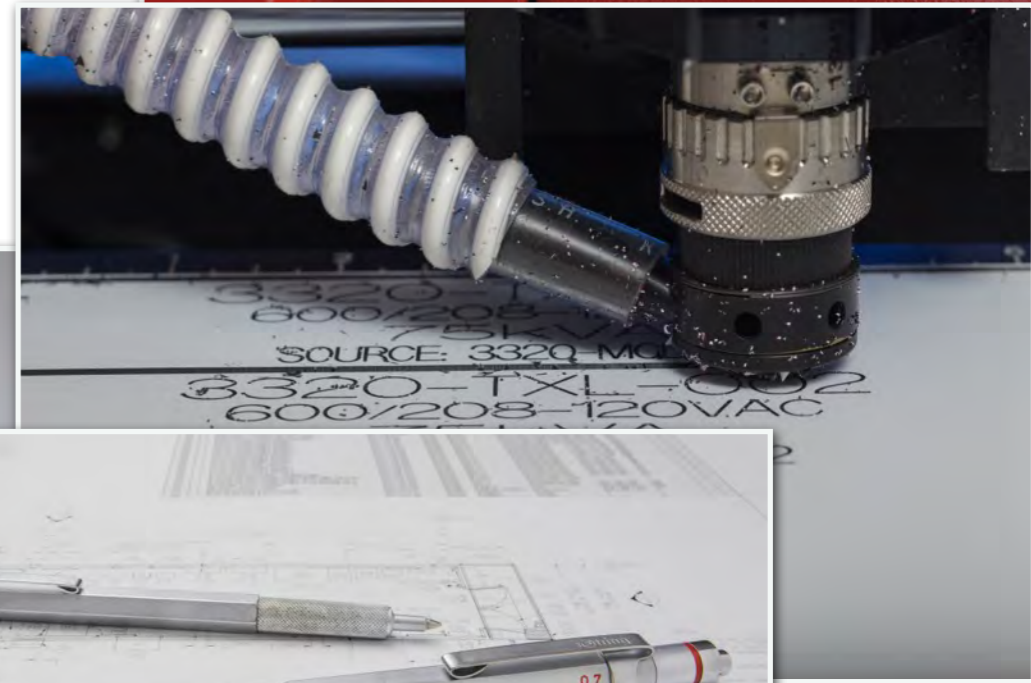
Customer Testimonials

- TRANS CANADA** “It was a pleasure to work with you on this project” Robert Jones, Vice President Keystone Pipelines
- BANTREL** “Thank you for the hardwork and dedication to our Project”
 Mark Griffiths, Buildings Manager, Kevin Doucette, Buyer, Tara Wilson, Buildings Coorinator, Jim Rustami RE
- BECHTEL** “ Please extend our thanks to all your team for the coordination from your engineers, craftsmanship from your builders, ownership and commitment from each of your team to deliver a high quality product bearing Sonic’s name”- John Baily, Regional Chief Engineer & Allan Stewart, Project Procurement Manager





Our Capabilities





Sonic & Tier I Supplier Facilities

- Sonic-Head Office
- Synergy- Head Office
- Brenco- Head Office
- Kayson- Head Office
- Sonic-Remote Storage
- Sonic-Near Shore Storage
- Sonic- Water Front Access
- Sonic-Westbay





Certifications

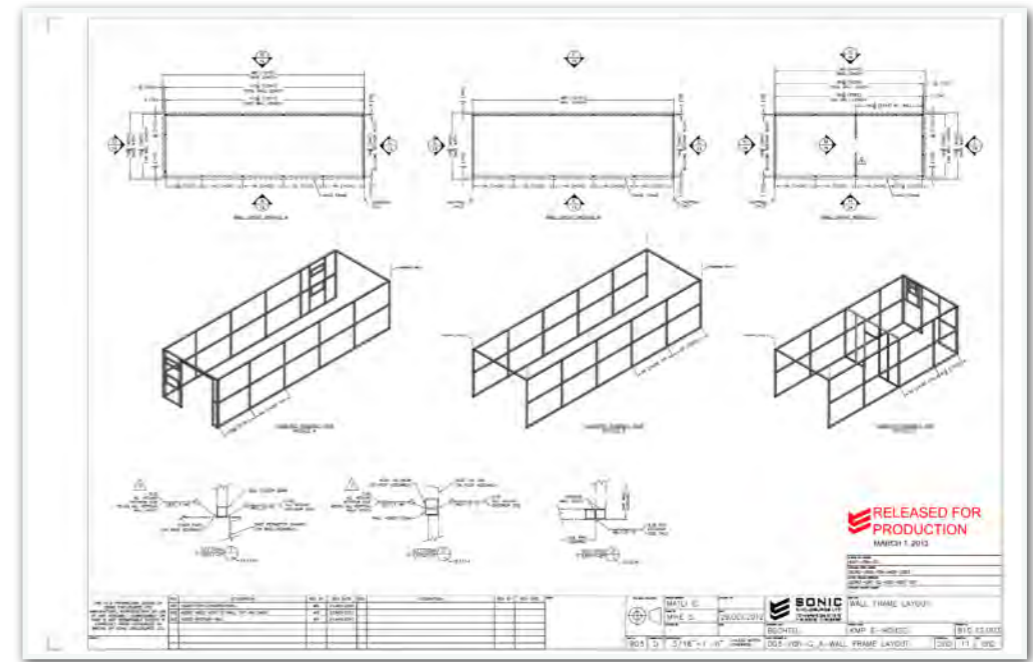
- ISO 9001
- Canadian Welding Bureau
- Det Norske Veritas
- A660
- Manufacturing Industry Occupational Safety Alliance of BC
- Association of Professional Engineers & Geoscientists of BC
- Federal Motor Vehicle Safety Standards





Tools & Systems [Design]

- Auto CAD



- Solid Works



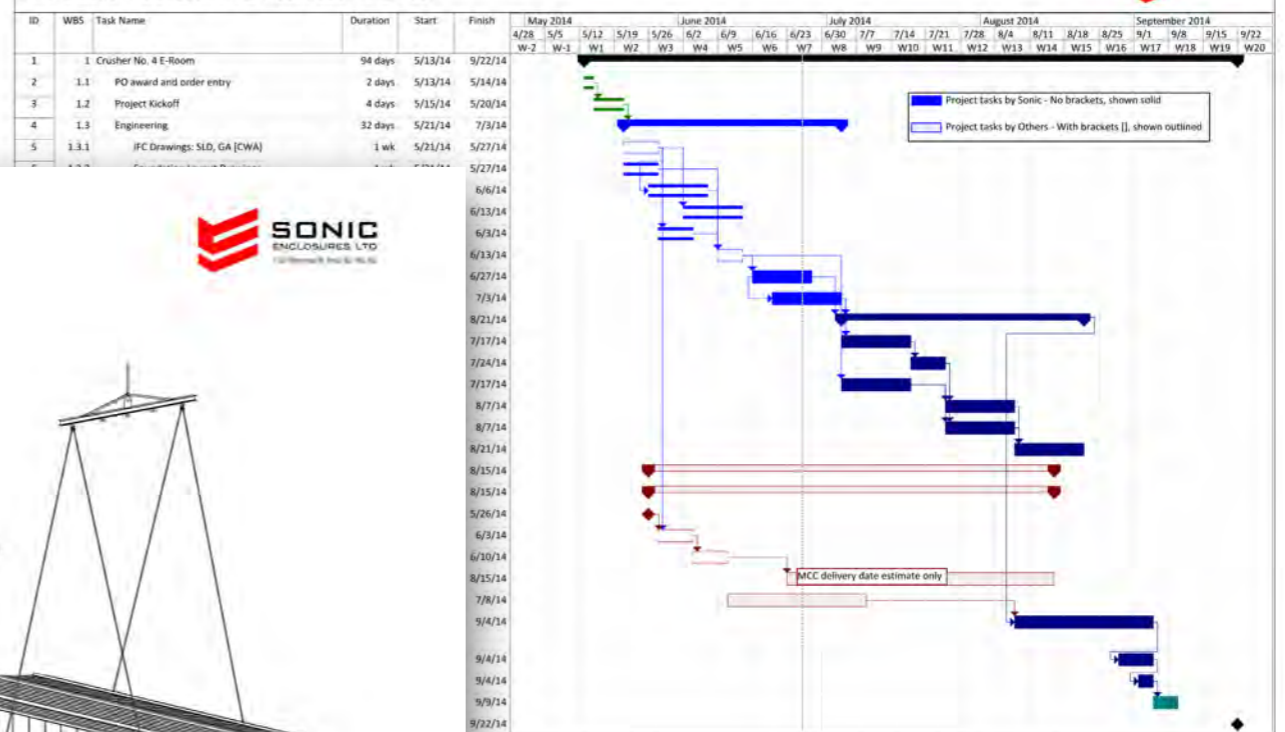


Tools & Systems

[Project Management]

- Manuals & Technical Documents- MS Word

Sonic Manufacturing and Delivery Schedule Rev005
HVC Crusher Relocation #4 E-Room 300-RME-7001



December 2, 2013 Rev 003

Bechtel KMP E-House

KMP E-House Installation Manual

200 - Structural

No	Category	Description
*4	W-Beam Placement	Lift W18x60 Beams (2 per module) into position on top of pile caps Check that W18x60 beams are level and adjust base-plates if necessary. (Refer to 25363-0000-3PS-AKBP-0001 Spec for A-Architectural - Pre-Fab Electrical Room, section 2.5.7) Weld the W18x60 beams to the pile cap plates (Figure 4). Refer to drawing '0xx-000-DET-CONCRETE PEDESTAL DETAILS'.
5	Lifting and Placement of Modules	Lifting lugs (4 per module), provided may have to be re-mounted to the base frame making sure that all bolts are tight (Figure 2). Use Ø1" UNC x 5-1/2" long A490 bolts c/w 1" UNC nuts and two 1" flat washers (3 bolts per lift lug). Consult drawing '0xx-200-TYPICAL BASE DETAILS'. Consult Lifting detail drawings '0xx-000-G A-LIFTING DIAGRAM A', for information on module lifting point positions, center of gravity, overall dimensions and weights. Each shipping component shall be unloaded from truck and positioned onto cap plates (Standard - Figure 3) or on W18x60 beam (if needed - Figure 4) as per drawing '0xx-000-DET-CONCRETE PEDESTAL DETAILS'. Remove any temporary shipping material from each building section. Prior to positioning second module fasten foam tape to the perimeter of the building structure at the shipping split (Figure 5).

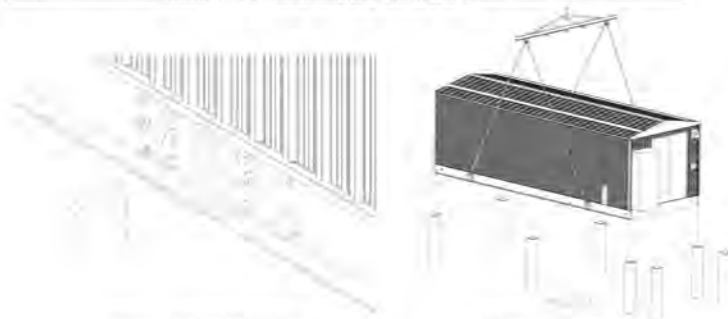


Figure 2 - Lift Lug Attachment



Figure 3 - Lifting onto Pile Caps

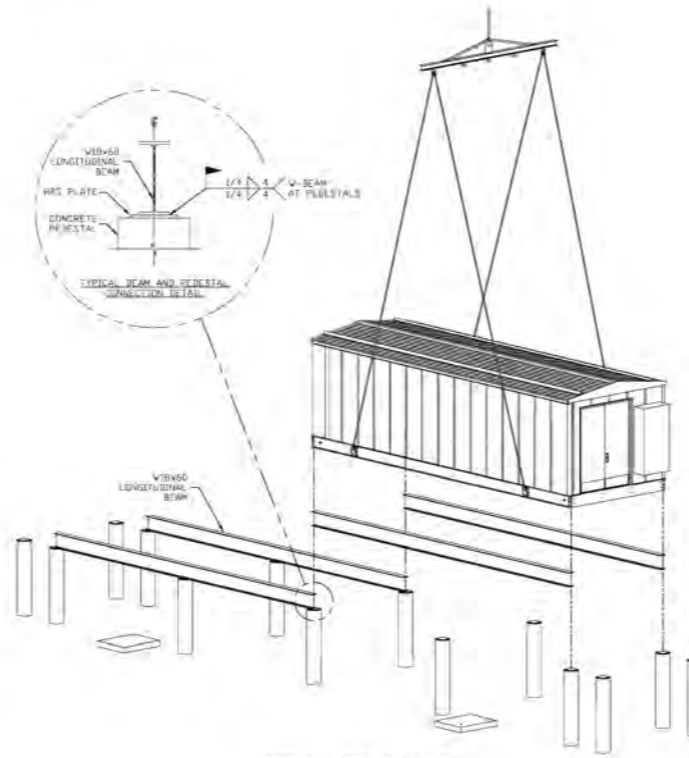


Figure 4 - Lifting onto W-Beams

- Project Management- MS Project & Excel



Tools & Systems

[Production Management]

- Production WEB Cams-Enable Time & Motion Studies - AMEC

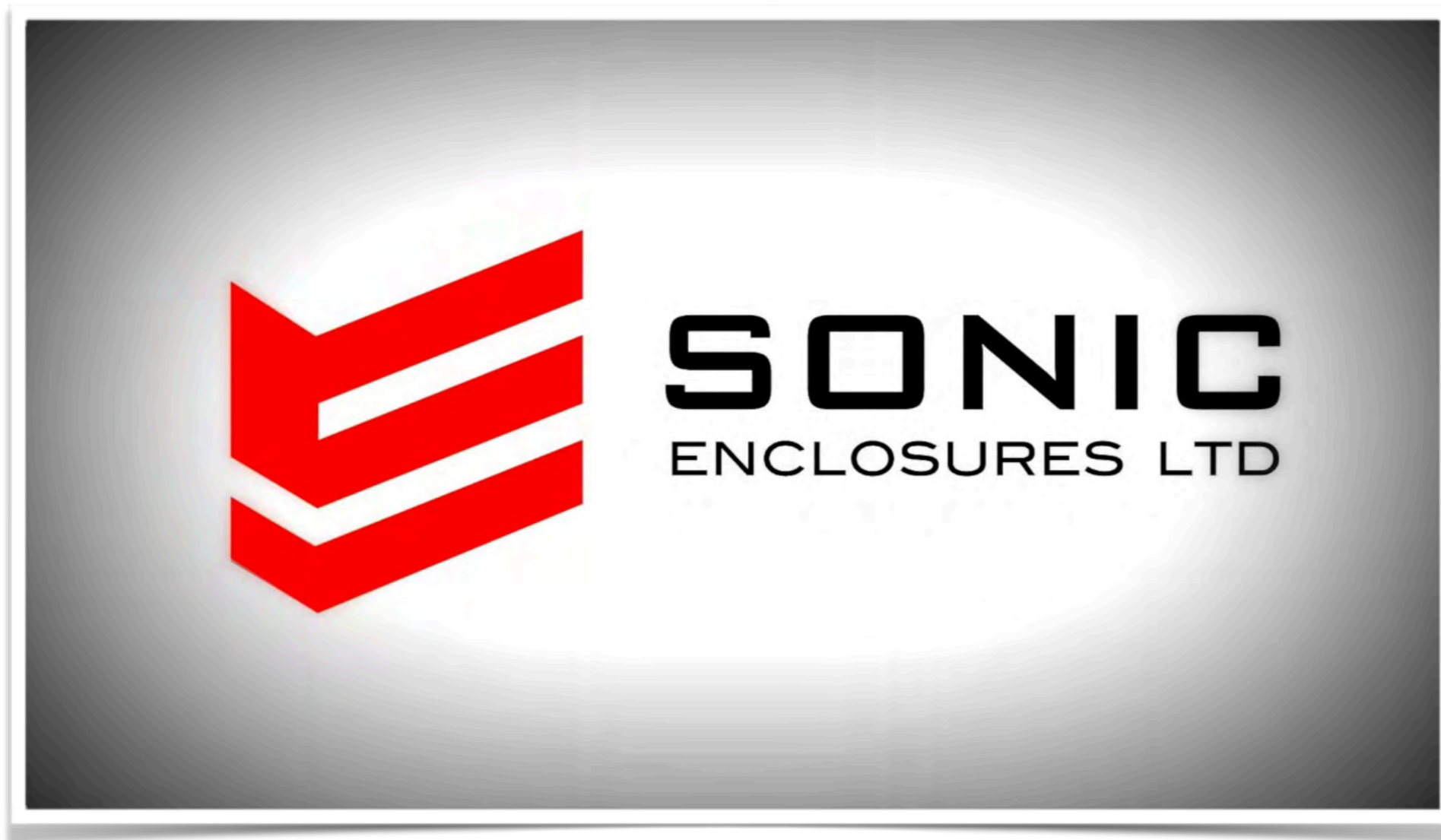




Tools & Systems

[Production Management]

- Production WEB Cams-Enable Time & Motion Studies - BECHTEL





Tools & Systems

[Production Verification]

- iPad enables 360 videos of final product configurations- AMEC





Tools & Systems

[Production Verification]

- iPad enables 360 videos of final product configurations- BECHTEL

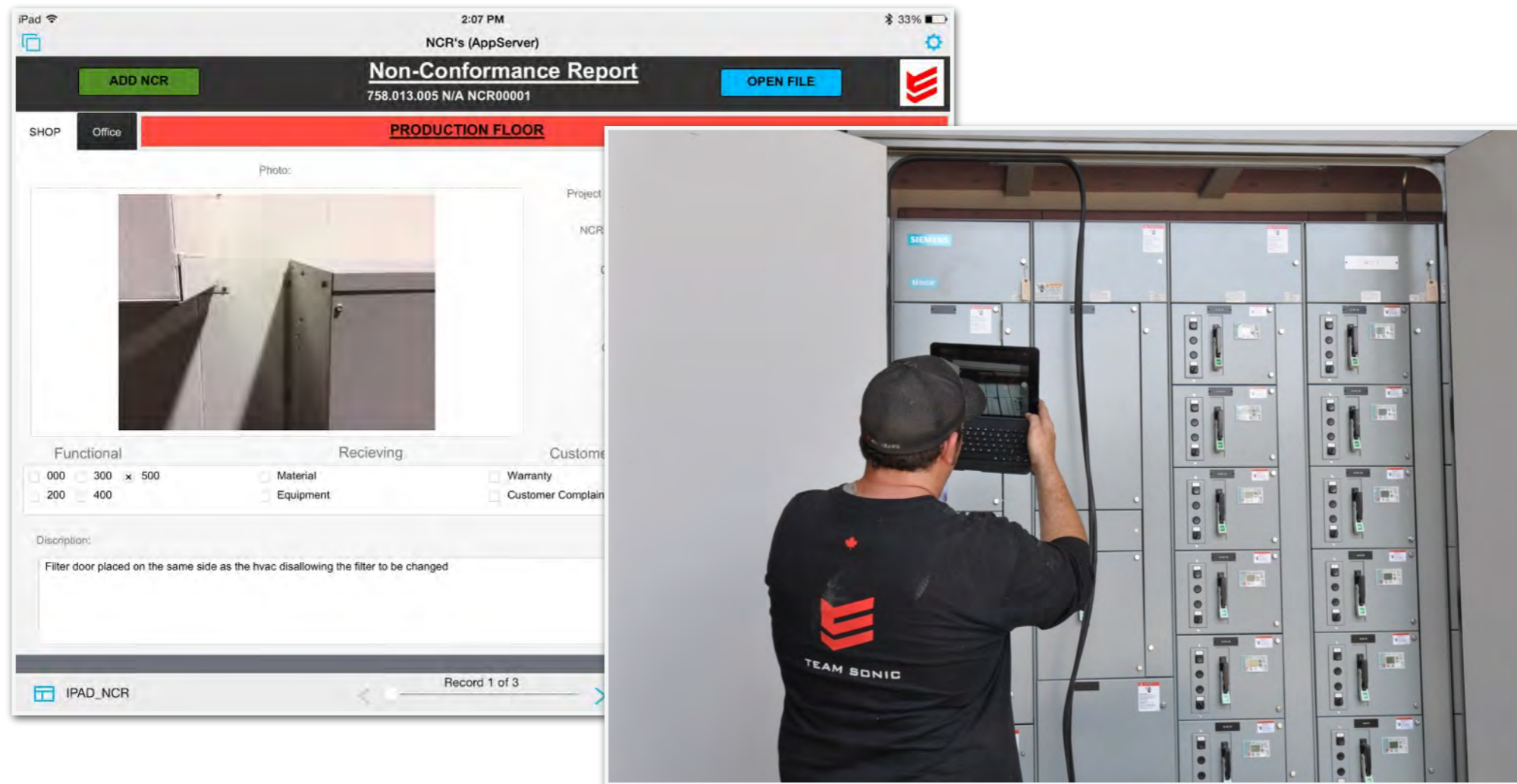




Tools & Systems

[Production Verification]

- iPad enables in-process inspections & NCR's



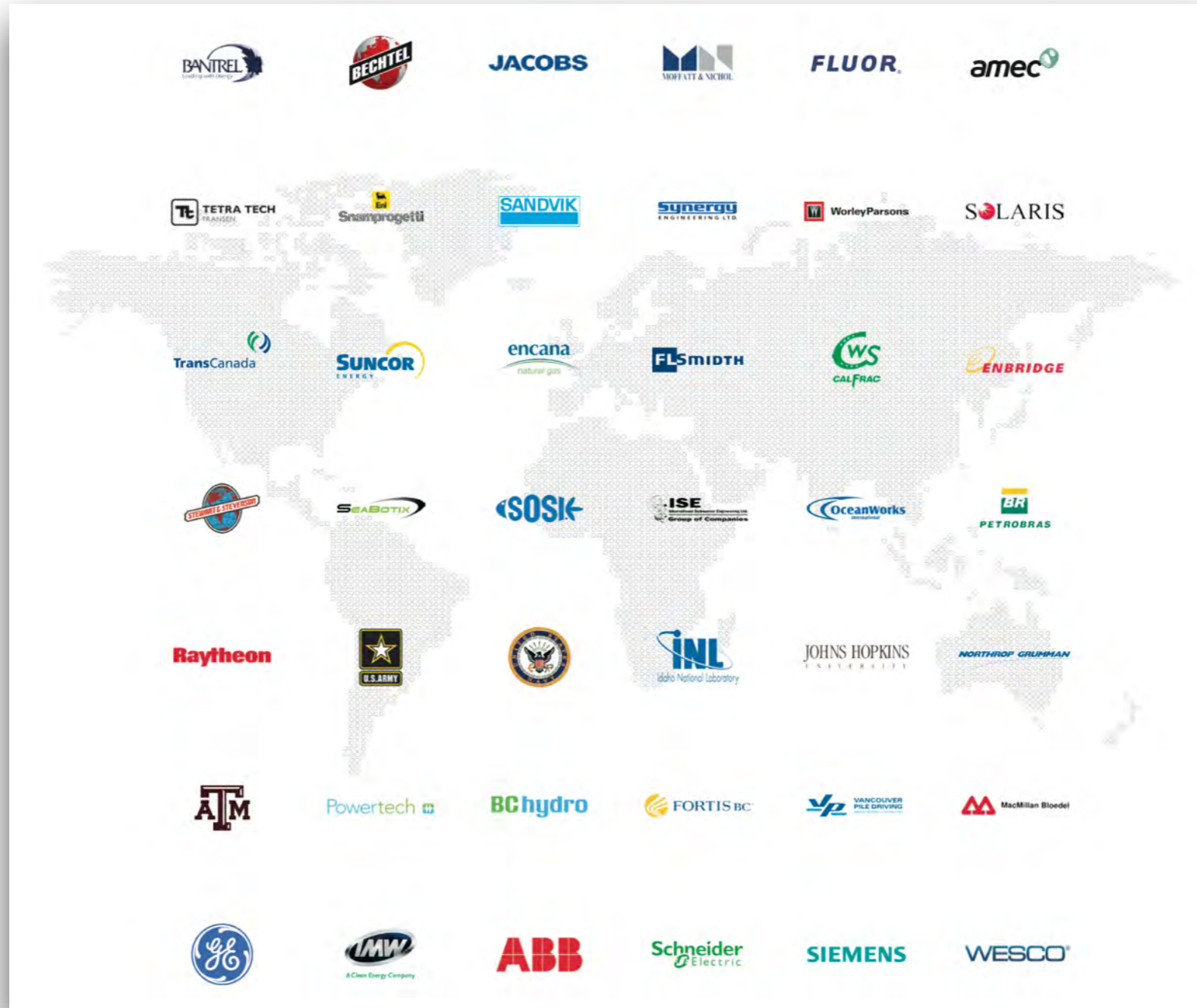


Our Experience & Strategy





Experience-[Customers]





Experience-[Products]



 Snamprogetti / Husky Sunrise Metallurgical Laboratory




 Rio Tinto Alcan / Bechtel Double Steam Plant



 DnV Certified ROV Launch System



 US Navy Disaster Relief Gen-sets



 Suncor Firebag 3 EHouses



 Trans Canada Pipeline EHouses



 Bechtel / Rio Tinto Alcan EHouses



 Amec Red Chris Mines EHouses



 Man Takraf Mining EHouse



Sonic Synergy Joint Venture (SSJV)- Leading providers of eHouses in the Pacific Northwest

SSJV - Web Site & Press Release

- www.LNG-eHouse.com
- Official Press Release

SONIC ENCLOSURES **Synergy ENGINEERING LTD.** *SSJV - Leading Providers of ehouses in the Pacific Northwest*

Home About Team Products LNG Basics News Contact

Sonic Synergy Joint Venture (SSJV) News & Events

SSJV are leading a consortium of BC companies that will work together strategically to play a key role in the upcoming Pacific NorthWest LNG projects in British Columbia. Given the scope and magnitude of these projects, our team approach is better for BC Industry and our customers. [Read the Press Release>>>](#)

Sonic Enclosures Ltd & Synergy Engineering Ltd Announce Joint Venture

179 Years of Business Experience
See how our joint venture and Tier 1 partners can benefit industrial projects in British Columbia's Pacific Northwest

"Our team approach is better for BC Industry and our Customers"

SONIC ENCLOSURES LTD
7127 Honeyman Street
Delta BC, V4G 1E2
604-946-6100
info @ LNG-eHouse.com

"SSJV- Leading providers of eHouses in the Pacific North West"

Synergy ENGINEERING LTD
135 Glacier Street
Coquitlam BC, V3K 5Z1
604-464-3663
info @ LNG-eHouse.com

15 February 2014

For Immediate Release:

Sonic Enclosures Ltd & Synergy Engineering Ltd Announce Joint Venture

We are pleased to announce the Sonic Synergy Joint Venture (SSJV). For over a decade Sonic and Synergy have collaborated on numerous eHouse projects throughout North and South America.

With Synergy's expertise in electrical engineering and development of drive and control technology combined with Sonic's rich experience in designing and producing industrial enclosures; we feel strongly that as a team we are able to offer our customers better solutions and access to a larger pool of resources.

Sonic recently completed the delivery of 23 electrical houses to the Kitimat Modernization Project in the Pacific Northwest of British Columbia and will leverage this knowledge and experience so that the SSJV can provide the highest value services to the market.

"We are excited to play a key role in the development of key infrastructure for BC, and we welcome the challenges these projects will bring" - Matei Ghelesel, P.Eng P.M.P. President & COO Sonic.

"After many years of successful collaboration on projects with Sonic, this joint venture will enable us to be more competitive in the market and offer our customers more comprehensive solutions" - Rick Neuman, P.Eng, President Synergy

For more information about our products and services, please visit www.LNG-eHouse.com, or call us directly at the telephone numbers listed above. On behalf of the SSJV, we look forward to being of service to Beautiful British Columbia during this exciting period of our development.

Kind Regards,

Matei Ghelesel, P.Eng P.M.P., President & COO, Sonic

Rick Neuman, P.Eng, President, Synergy

Stan King, P.Eng, P.M.P, MBA, CEO & Director of Sales, Sonic

David Atkinson, Executive VP, Synergy

British Columbia www.LNG-eHouse.com Alberta



Sonic Synergy Joint Venture (SSJV)- Leading providers of eHouses in the Pacific Northwest

Strategy- SSJV



Prime Contractor, Produce eHouse shell and integrate all subs

Lead Electrical Engineering & Integration



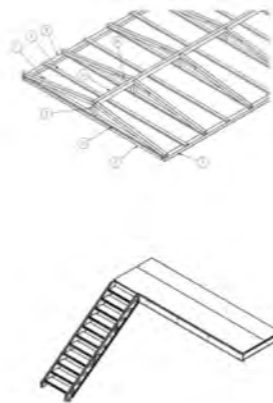
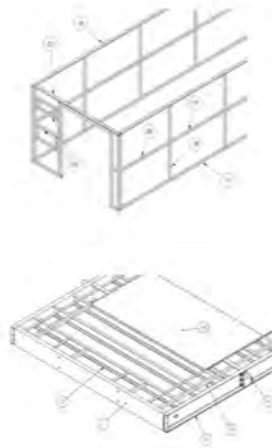
Supply of Structural Sub Assemblies

Supply of Structural Parts

Supply of Envelope Parts

Supply of Electrical Equipment

Supply of Mechanical Equipment





Sonic Synergy Joint Venture (SSJV)- Leading providers of eHouses in the Pacific Northwest

Closing Comments

We've Invested in:

- Our people, and it's paying dividends
- New Methodologies & Quality Management Systems which have improved our ability to exceed our customers' expectations
- Leveraging our experience and developing our strategic Joint Venture with Synergy Engineering to ensure these large scale programs are executed successfully

“At Sonic its all about **Our People, Our Capabilities & Our Experience**; and we look forward to being of service to you”



Bechtel / Rio Tinto Alcan eHouses



SONIC
ENCLOSURES LTD

Synergy
ENGINEERING LTD.

Sonic Synergy Joint Venture (SSJV)- Leading providers of eHouses in the Pacific Northwest

Thank You / Q&A



Appendix- Full Sized Pictures



















Snamprogetti / Husky Sunrise Metallurgical Laboratory



Rio Tinto Alcan / Bechtel Double Steam Plant



DnV Certified ROV Launch System



US Navy Disaster Relief Gen-sets



Suncor Firebag 3 E Houses



Trans Canada Pipeline EHouses



Bechtel / Rio Tinto Alcan EHouses



Amec Red Chris Mines EHouses



Man Takraf Mining EHouse